

WAVERLY, TENNESSEE

AL-6522 (FAA)

VORTAC GHM 111.6 Chan 53	APP CRS 318°	Rwy Idg TDZE Apt Elev	NA NA 756
--	------------------------	-----------------------------	--------------------------------------

VOR/DME or GPS-A
WAVERLY/HUMPHREYS COUNTY (ØM5)

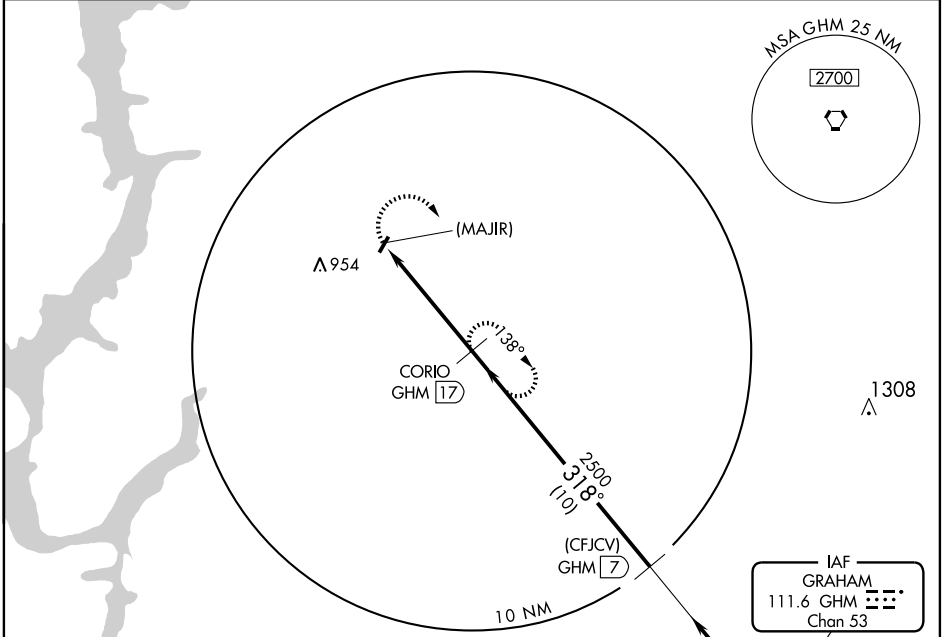
Obtain local altimeter on CTAF, if not received, use Nashville altimeter setting.

MISSED APPROACH: Climbing right turn to 2500 via GHM R-318 to CORIO 17 DME and hold.

MEMPHIS CENTER
125.85 381.4

GCO
135.075

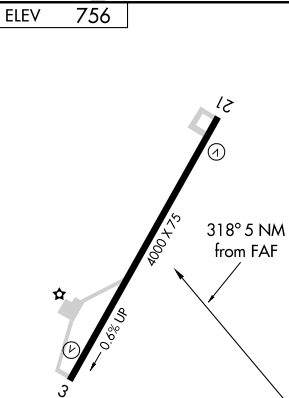
UNICOM
122.8 (CTAF)



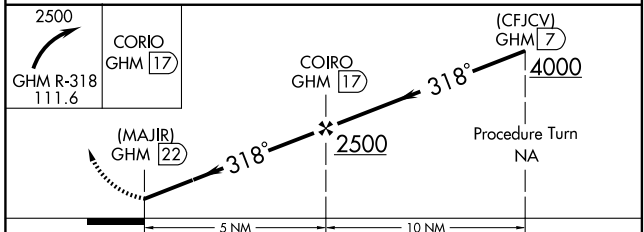
SE-1, 19 NOV 2009 to 17 DEC 2009

SE-1, 19 NOV 2009 to 17 DEC 2009

ELEV **756**



MRL Rwy 3-21



CATEGORY	A	B	C	D
CIRCLING	1220-1 464 (500-1)	1220-1¼ 464 (500-1¼)	1220-1½ 464 (500-1½)	1320-2 564 (600-2)
NASHVILLE ALTIMETER SETTING MINIMUMS				
CIRCLING	1460-1 704 (800-1)	1460-1¼ 704 (800-1¼)	1460-2 704 (800-2)	1460-2¼ 704 (800-2¼)

WAVERLY, TENNESSEE
Amdt 2C 08101

36°07'N-87°44'W

WAVERLY/HUMPHREYS COUNTY (ØM5)
VOR/DME or GPS-A