

WATONGA, OKLAHOMA

AL-6530 (FAA)

# VOR/DME-A WATONGA RGNL (JWG)

VORTAC IFI <b>114.7</b> Chan <b>94</b>	APP CRS <b>271°</b>	Rwy Idg TDZE Apt Elev <b>1550</b>	N/A N/A 1550
--	------------------------	--	--------------------

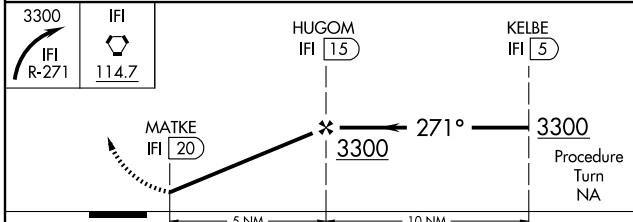
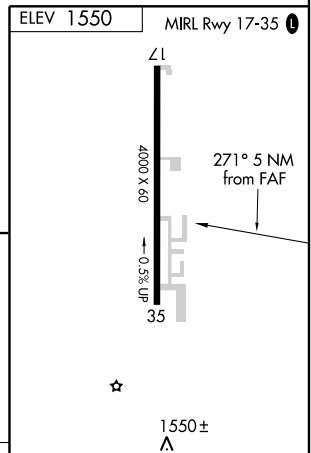
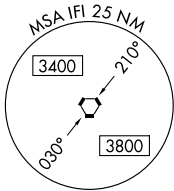
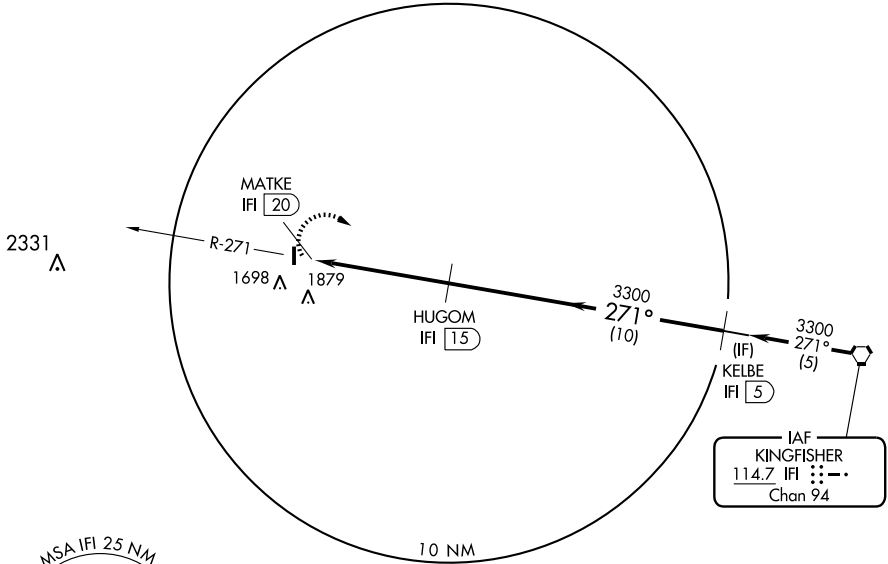
**▽** If local altimeter setting not received, use Clinton Rgnl  
**△** NA altimeter setting and increase all MDAs 100 feet.

MISSED APPROACH: Climbing right turn to 3300 via IFI R-271 to IFI VORTAC.

AWOS-3  
**134.175**

VANCE APP CON \*  
**120.525 306.3**

UNICOM  
**122.8** (CTAF) **0**



CATEGORY	A	B	C	D	Knots	60	90	120	150	180
CIRCLING	2180-1 630 (700-1)	2240-1¼ 690 (700-1¼)	2240-2 690 (700-2)	NA	Min:Sec					

WATONGA, OKLAHOMA  
Amdt 3 07298

35°52' N-98°25' W

# WATONGA RGNL (JWG) VOR/DME-A

SC-1, 11 MAR 2010 to 08 APR 2010

SC-1, 11 MAR 2010 to 08 APR 2010