

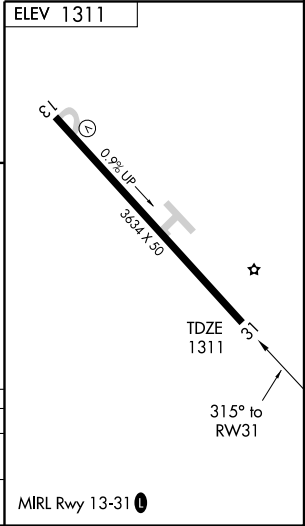
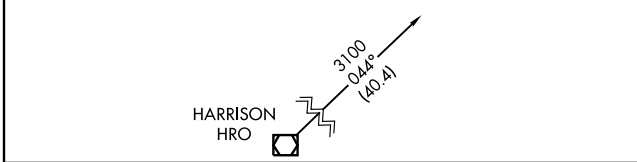
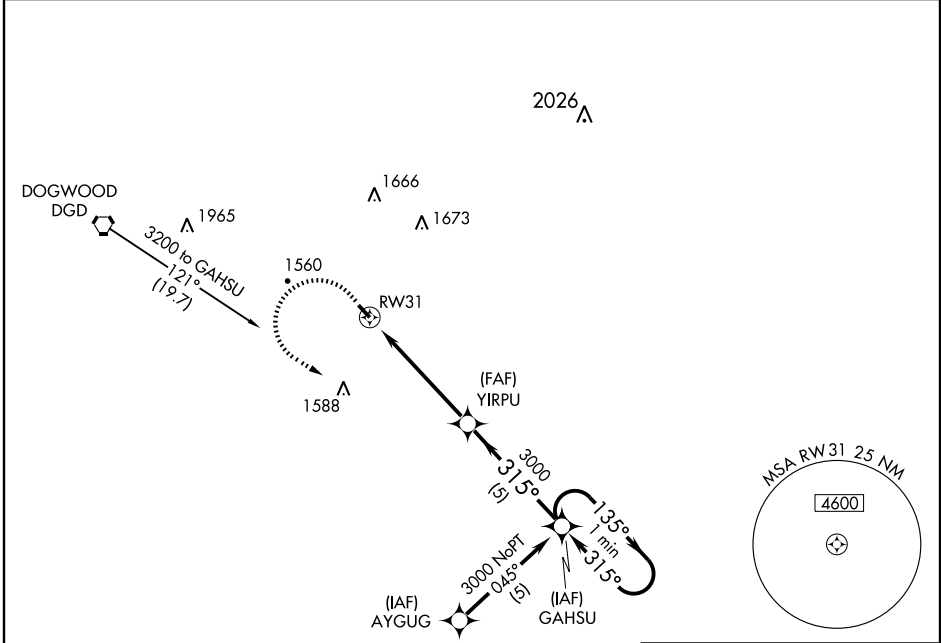
GPS RWY 31

AVA BILL MARTIN MEMORIAL (A0V)

APP CRS 315°	Rwy Idg 3634
	TDZE 1311
	Apt Elev 1311

<p>▲ NA Use Springfield altimeter setting.</p>	<p>MISSED APPROACH: Climb to 2400 then climbing left turn to 3000 direct GAHSU WP and hold.</p>
---	---

<p>SPRINGFIELD APP CON 126.35</p>	<p>UNICOM 122.7 (CTAF) 0</p>
--	--



↑	↶	✦	YIRPU	GAHSU	One Minute Holding Pattern
RW31		3000		3000	
5.2 NM		5 NM			

CATEGORY	A	B	C	D
S-31	1940-1	629 (700-1)	NA	
CIRCLING	1980-1	669 (700-1)	NA	

GPS RWY 31

NC-3, 11 MAR 2010 to 08 APR 2010

NC-3, 11 MAR 2010 to 08 APR 2010