

NDB RWY 1

IOLA/ALLEN COUNTY (K88)

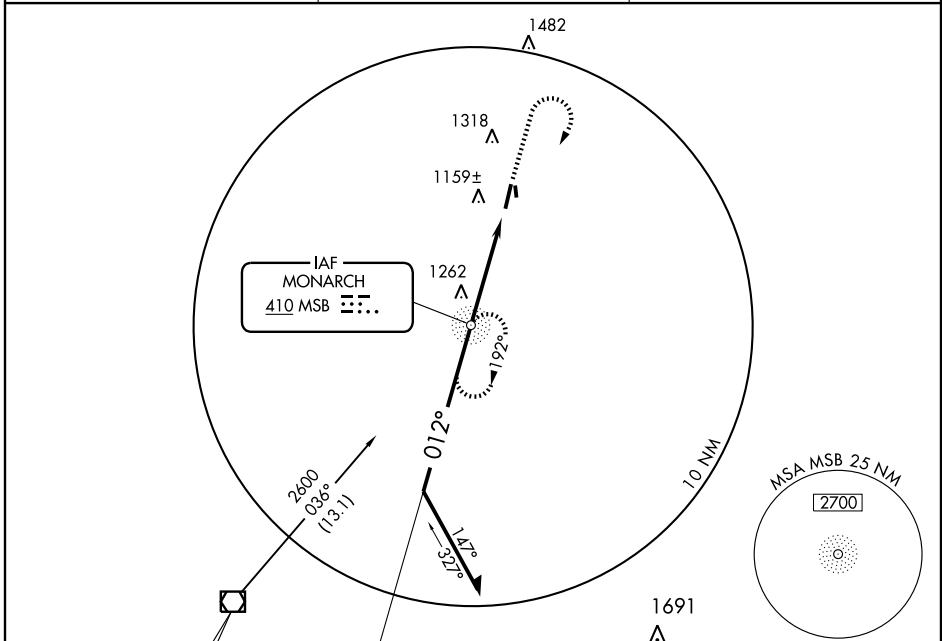
NDB MSB 410	APP CRS 012°	Rwy Idg TDZE Apt Elev	5500 1013 1015
-----------------------	------------------------	-----------------------------	---

▼ Visibility reduction by helicopters NA. When local altimeter setting not received, Use Chanute altimeter setting and increase all MDA 40 feet, increase S-1 Cat C visibility ¼.

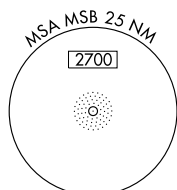
▲ NA

MISSED APPROACH: Climb to 2000 then climbing right turn to 2600 direct MSB NDB and hold.

AWOS-3 128.325	KANSAS CITY CENTER 127.725 270.25	UNICOM 122.8 (CTAF)
--------------------------	---	-------------------------------

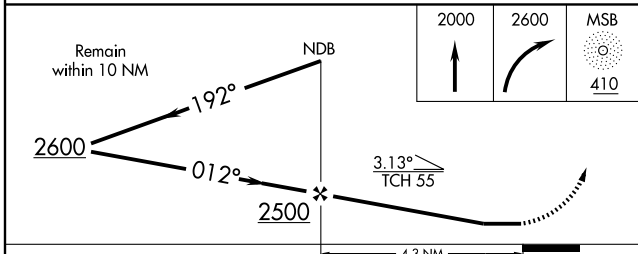
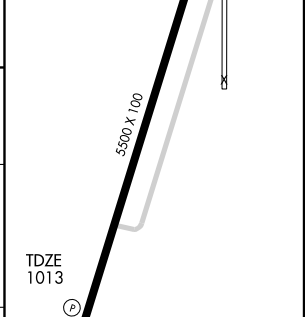


CHANUTE
109.2 CNU
Chan 29



1691
▲

ELEV 1015
REIL Rwy 1 and 19
HIRL Rwy 1-19



CATEGORY	A	B	C	D
S-1	1500-1 487 (500-1)		1500-1¼ 487 (500-1¼)	NA
CIRCLING	1520-1 505 (600-1)		1620-1¾ 605 (700-1¾)	NA

FAF to MAP 4.3 NM					
Knots	60	90	120	150	180
Min:Sec	4:18	2:52	2:09	1:43	1:26

NC-2, 11 MAR 2010 to 08 APR 2010

NC-2, 11 MAR 2010 to 08 APR 2010