

IOLA, KANSAS

AL-6546 (FAA)

# RNAV (GPS) RWY 1

IOLA/ALLEN COUNTY (K88)

APP CRS	Rwy Idg	<b>5500</b>
<b>009°</b>	TDZE	<b>1013</b>
	Apt Elev	<b>1015</b>

**▽** DME/DME RNP-0.3 NA. Visibility reduction by helicopters NA. When local altimeter setting not received, use Chanute altimeter setting and increase all MDA 40 feet. VDP NA when using Chanute altimeter setting.

**△** NA

**MISSED APPROACH:** Climb to 3000 direct TIGAY and hold.

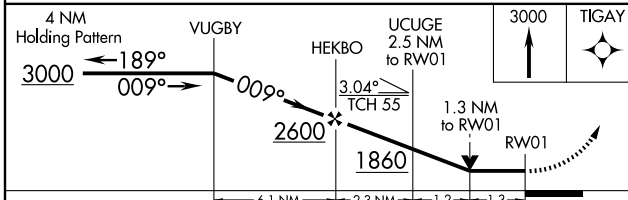
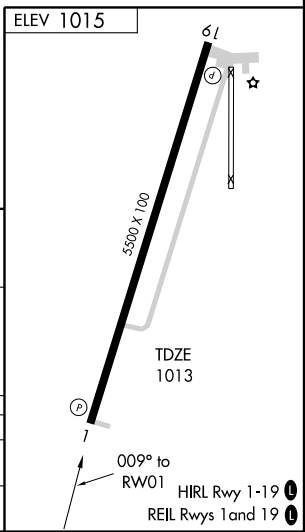
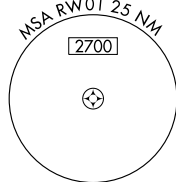
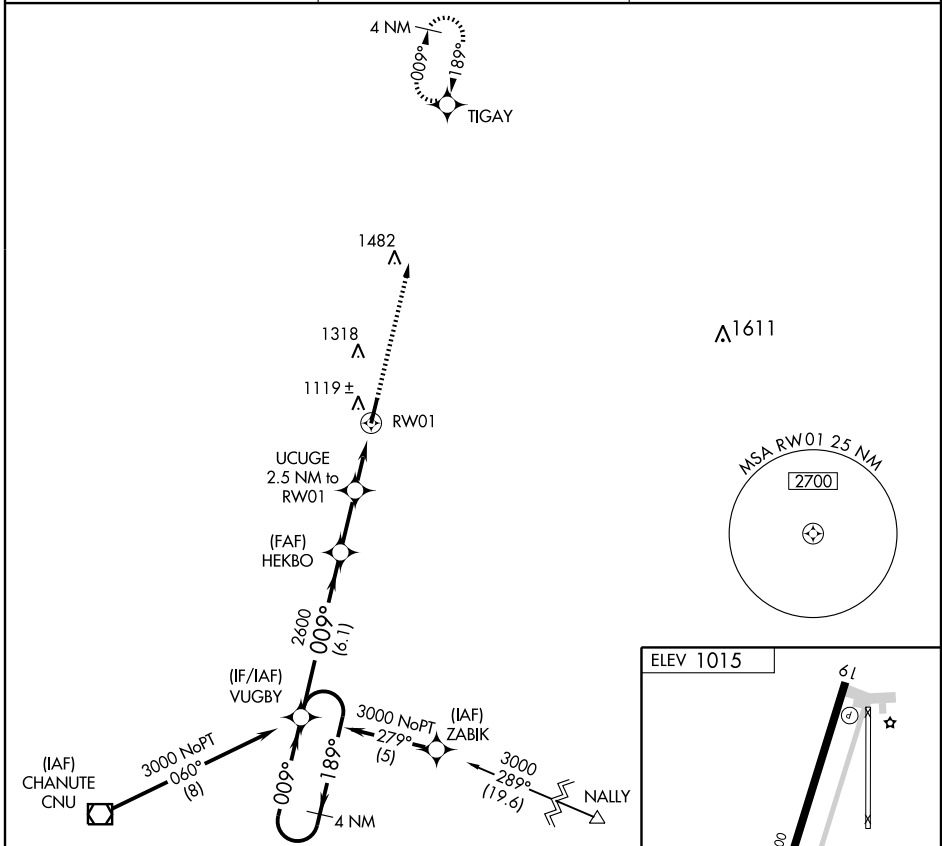
AWOS-3  
**128.325**

KANSAS CITY CENTER  
**127.725 270.25**

UNICOM  
**122.8 (CTAF) ①**

NC-2, 11 MAR 2010 to 08 APR 2010

NC-2, 11 MAR 2010 to 08 APR 2010



CATEGORY	A	B	C	D
LNVA MDA	1460-1	447 (500-1)	1460-1¼ 447 (500-1¼)	NA
CIRCLING	1520-1	505 (600-1)	1620-1¾ 605 (700-1¾)	NA

IOLA, KANSAS  
Orig 09071

37°52'N-95°23'W

# RNAV (GPS) RWY 1