

NDB RWY 6

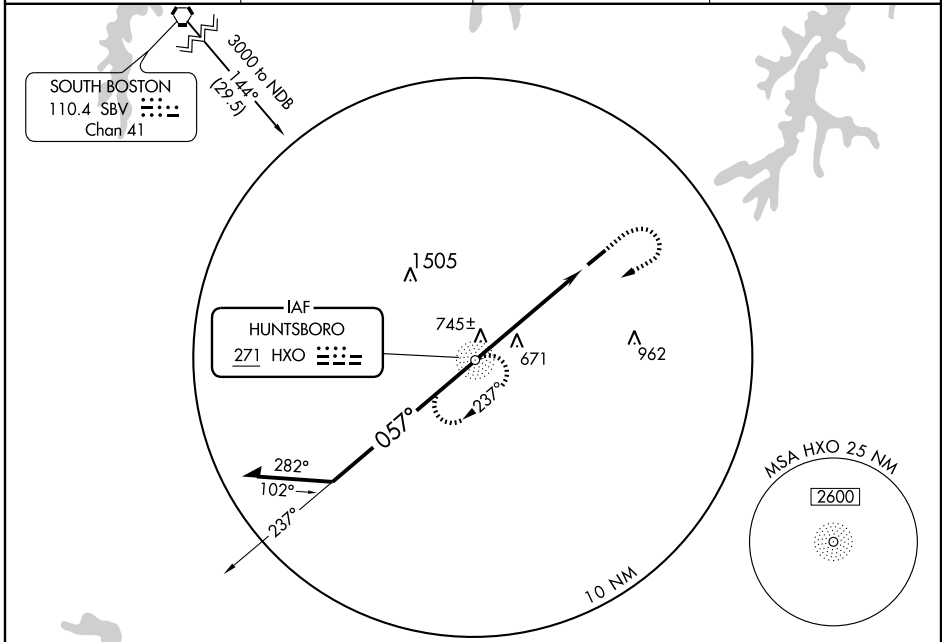
OXFORD/HENDERSON-OXFORD (H/NZ)

NDB HXO	APP CRS	Rwy Idg	5002
271	057°	TDZE	526
		Apt Elev	526

⚠ When local altimeter setting not received, use Roxboro altimeter setting and increase all MDA 80 feet; increase S-6 Cats C and D visibility ¼ mile. Visibility reduction by helicopters NA.

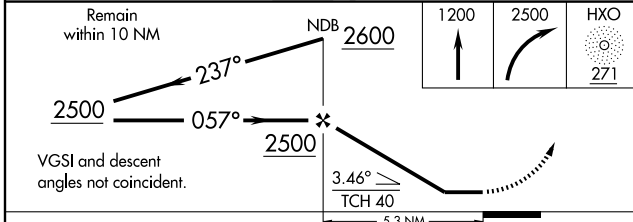
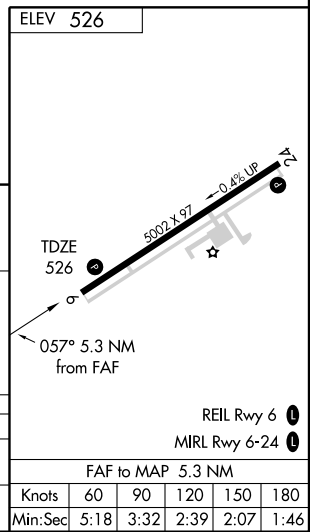
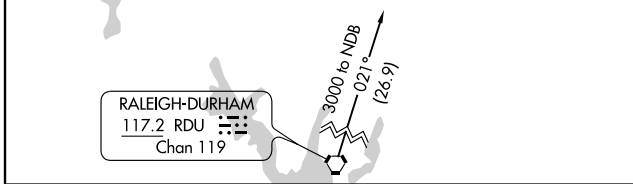
MISSED APPROACH: Climb to 1200 then climbing right turn to 2500 direct HXO NDB and hold.

AWOS-3 118.625	RALEIGH APP CON 132.35 256.9	GCO 135.075	UNICOM 122.8(CTAF) 0
--------------------------	--	-----------------------	--------------------------------



SE-2, 11 MAR 2010 to 08 APR 2010

SE-2, 11 MAR 2010 to 08 APR 2010



CATEGORY	A	B	C	D
S-6	980-1 454 (500-1)		980-1½ 454 (500-1½)	980-1½ 454 (500-1½)
CIRCLING	980-1 454 (500-1)		980-1½ 454 (500-1½)	1080-2 554 (600-2)

NDB RWY 6

FAF to MAP 5.3 NM					
Knots	60	90	120	150	180
Min:Sec	5:18	3:32	2:39	2:07	1:46