

# RNAV (GPS) RWY 1

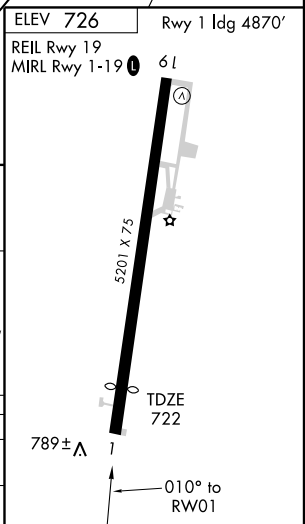
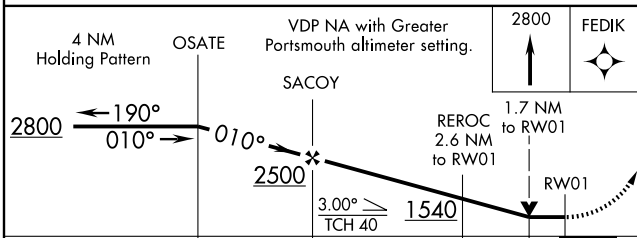
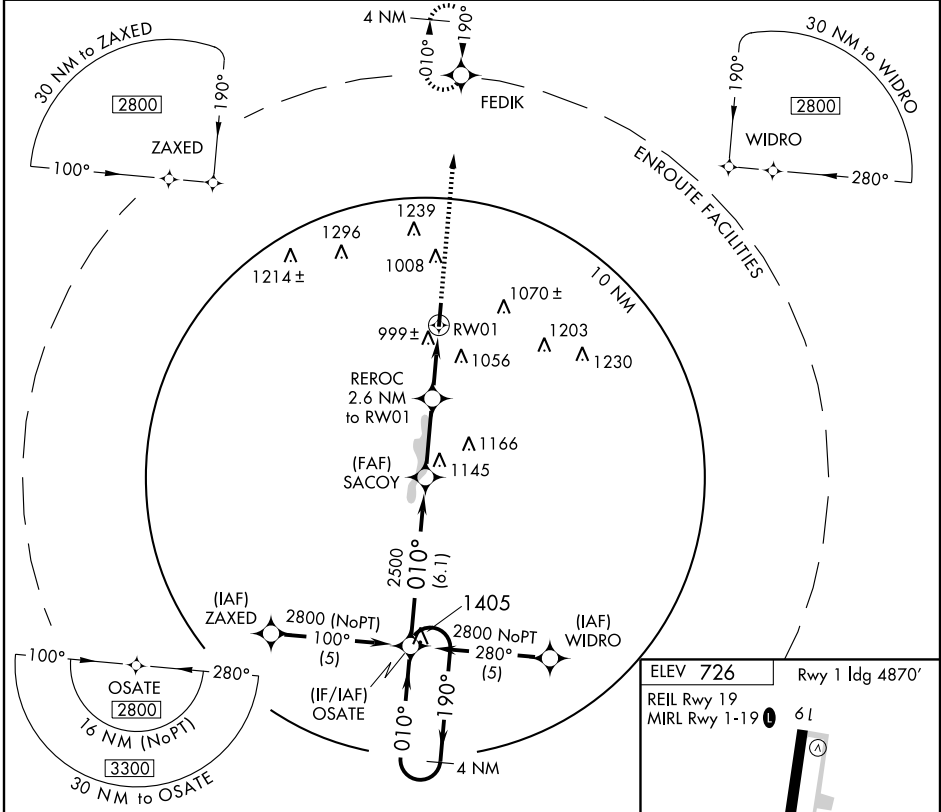
JACKSON / JAMES A. RHODES (I43)

APP CRS **010°**  
 Rwy Idg **4870**  
 TDZE **722**  
 Apt Elev **726**

▼ When local altimeter setting not received, use Greater Portsmouth altimeter setting and increase all MDA 60 feet, and Cat C/D visibilities ¼ mile, increase Circling Cat B/C/D visibilities ¼ mile. DME/DME RNP-0.3 NA.

MISSED APPROACH: Climb to 2800 direct FEDIK WP and hold.

AWOS-3 **118.825**      HUNTINGTON APP CON **128.4 270.1**      UNICOM **122.7 (CTAF) 0**



CATEGORY	A	B	C	D
RNAV MDA	1300-1	578 (600-1)	1300-1½ 578 (600-1½)	1300-1¾ 578 (600-1¾)
CIRCLING	1300-1 574 (600-1)	1420-1 694 (700-1)	1420-2 694 (700-2)	1420-2¼ 694 (700-2¼)

EC-2, 19 NOV 2009 to 17 DEC 2009

EC-2, 19 NOV 2009 to 17 DEC 2009