

RNAV (GPS) RWY 19

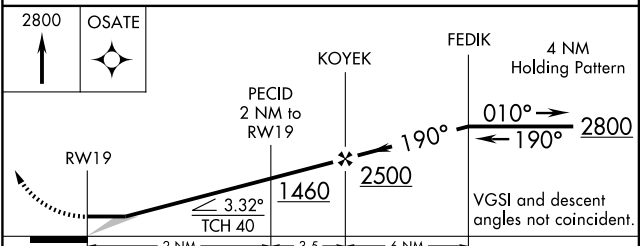
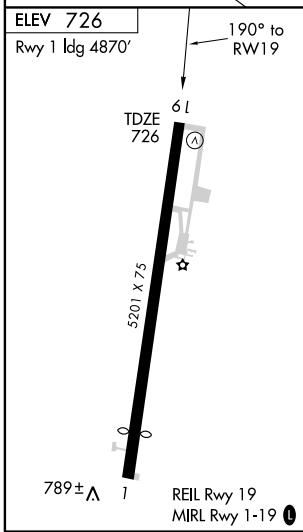
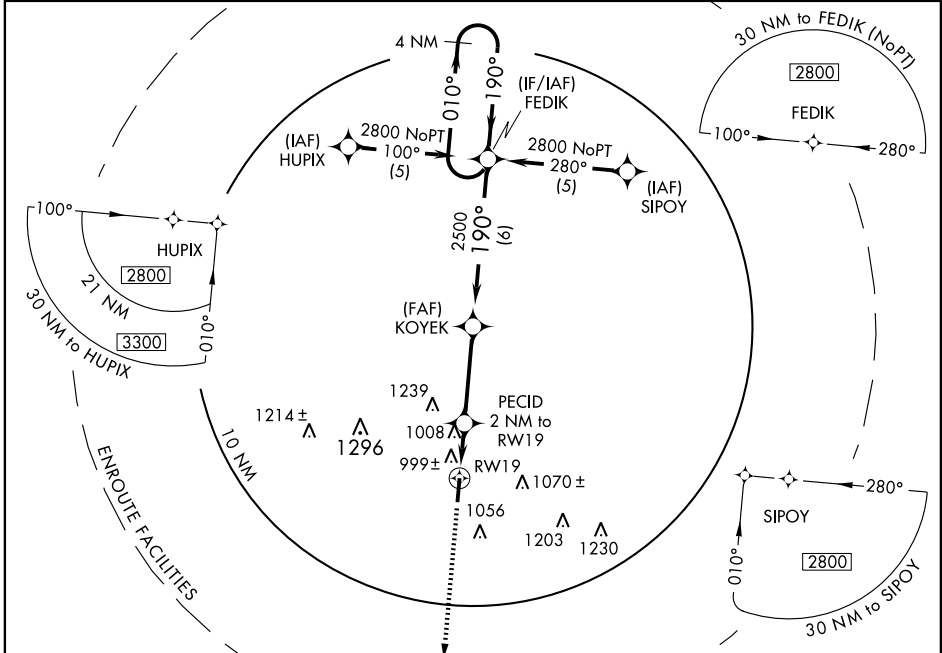
JACKSON/ JAMES A. RHODES (I43)

APP CRS 190°	Rwy ldg 5201
	TDZE 726
	Apt Elev 726

NA DME/DME RNP-0.3 NA.
When local altimeter setting not received, use Greater Portsmouth altimeter setting and increase all MDAs 60 feet, increase Circling Cat B/C/D visibilities ¼ mile.

MISSED APPROACH: Climb to 2800 direct OSATE WP and hold.

AWOS-3 118.825	HUNTINGTON APP CON 128.4 270.1	UNICOM 122.7 (CTAF) 0
--------------------------	--	---------------------------------



CATEGORY	A	B	C	D
LNAV MDA	1260-1	534 (600-1)	1260-1½ 534 (600-1½)	1260-1¾ 534 (600-1¾)
CIRCLING	1300-1 574 (600-1)	1420-1 694 (700-1)	1420-2 694 (700-2)	1420-2¼ 694 (700-2¼)

EC-2, 19 NOV 2009 to 17 DEC 2009

EC-2, 19 NOV 2009 to 17 DEC 2009