

RUSSELLVILLE, KENTUCKY

AL-6609 (FAA)

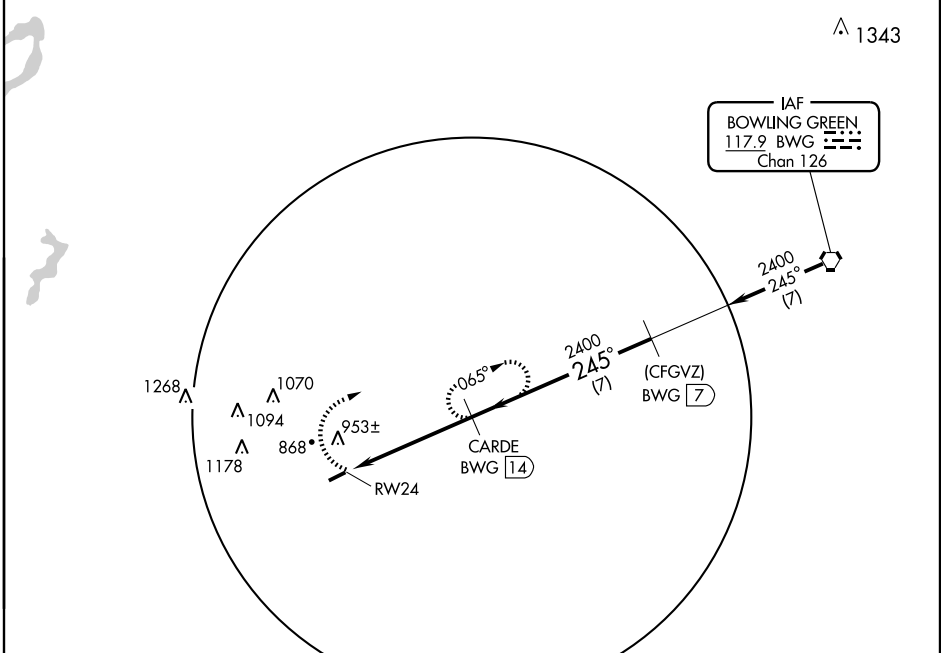
VORTAC BWG 117.9 Chan 126	APP CRS 245°	Rwy Idg TDZE 686 Apt Elev 686	3999
---	------------------------	---	-------------

VOR/DME or GPS RWY 24

RUSSELLVILLE-LOGAN COUNTY (4M7)

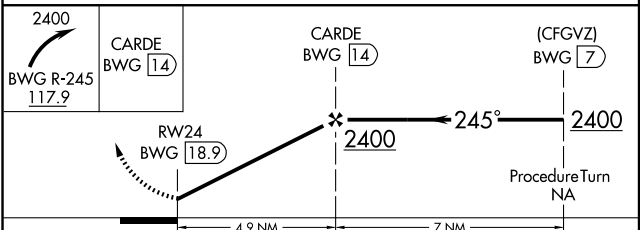
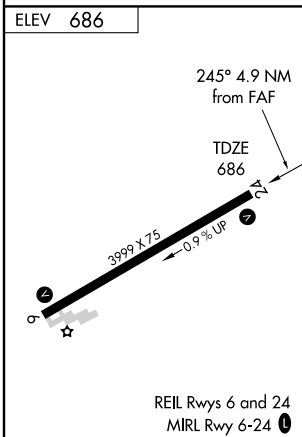
▲ NA Use Bowling Green altimeter setting. MISSED APPROACH: Climbing right turn to 2400 via BWG R-245 CARDE/14 DME and hold.

MEMPHIS CENTER **133.85 317.6** UNICOM **122.7 (CTAF) 0**



SE-1, 19 NOV 2009 to 17 DEC 2009

SE-1, 19 NOV 2009 to 17 DEC 2009



		CATEGORY A		CATEGORY B		CATEGORY C		CATEGORY D	
Knots	60	90	120	150	180				
Min:Sec									
CATEGORY		A		B		C		D	
S-24		1280-1		594 (600-1)				NA	
CIRCLING		1340-1		654 (700-1)				NA	

RUSSELLVILLE, KENTUCKY
Amdt 6 08101

RUSSELLVILLE-LOGAN COUNTY (4M7)
36°48'N-86°49'W **VOR/DME or GPS RWY 24**