

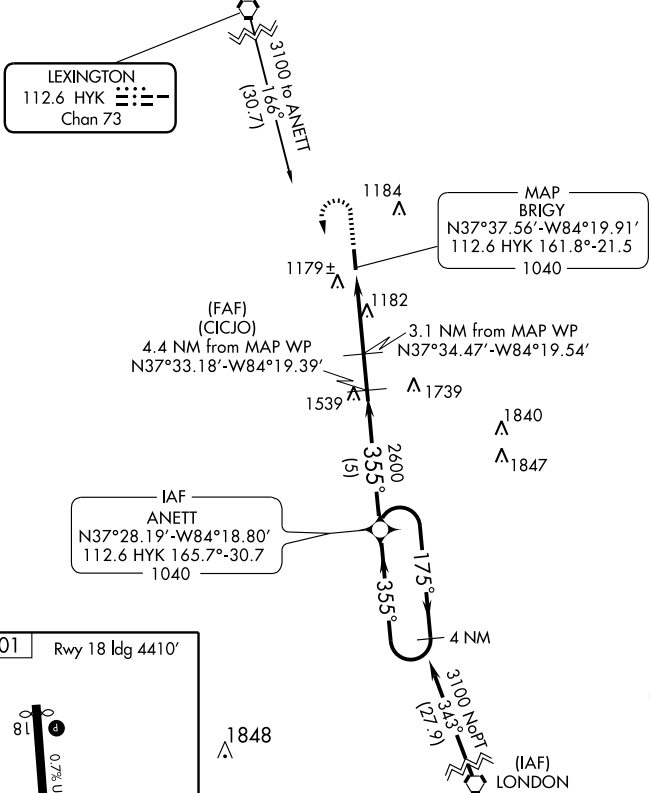
VORTAC HYK <b>112.6</b> Chan <b>73</b>	APP CRS <b>355°</b>	Rwy ldg TDZE Apt Elev	<b>4500</b> <b>1001</b> <b>1001</b>
--	------------------------	-----------------------------	---

# VOR/DME RNAV or GPS RWY 36

RICHMOND/MADISON (I39)

**▲ NA** Use Lexington altimeter setting. MISSED APPROACH: Climb to 3100 then left turn direct ANETT WP and hold.

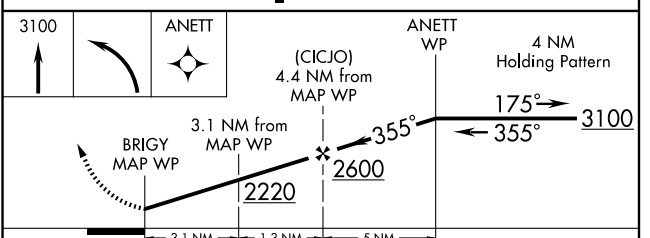
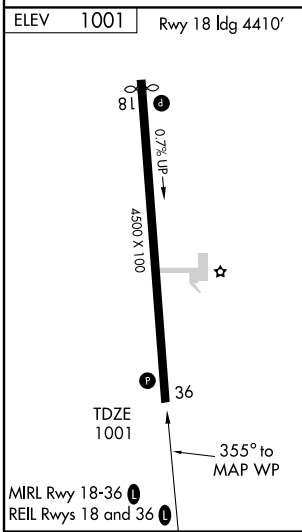
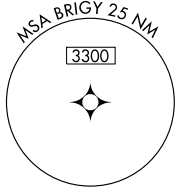
AWOS-3 <b>119.625</b>	LEXINGTON APP CON <b>120.15 259.3</b>	UNICOM <b>122.8</b> (CTAF) <b>①</b>
--------------------------	--	--



LEXINGTON  
112.6 HYK  
Chan 73

MAP  
BRIGY  
N37°37.56'-W84°19.91'  
112.6 HYK 161.8°-21.5  
1040

IAF  
ANETT  
N37°28.19'-W84°18.80'  
112.6 HYK 165.7°-30.7  
1040



CATEGORY	A	B	C	D
S-36	1600-1	599 (600-1)	1600-1½ 599 (600-1½)	1600-1¾ 599 (600-1¾)
CIRCLING	1640-1	639 (700-1)	1640-1¾ 639 (700-1¾)	1640-2 639 (700-2)

# VOR/DME RNAV or GPS RWY 36

SE-1, 19 NOV 2009 to 17 DEC 2009

SE-1, 19 NOV 2009 to 17 DEC 2009