

RICHMOND, KENTUCKY

AL-6610 (FAA)

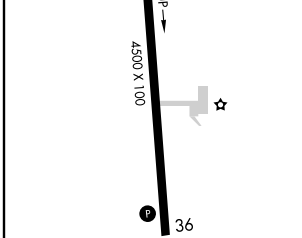
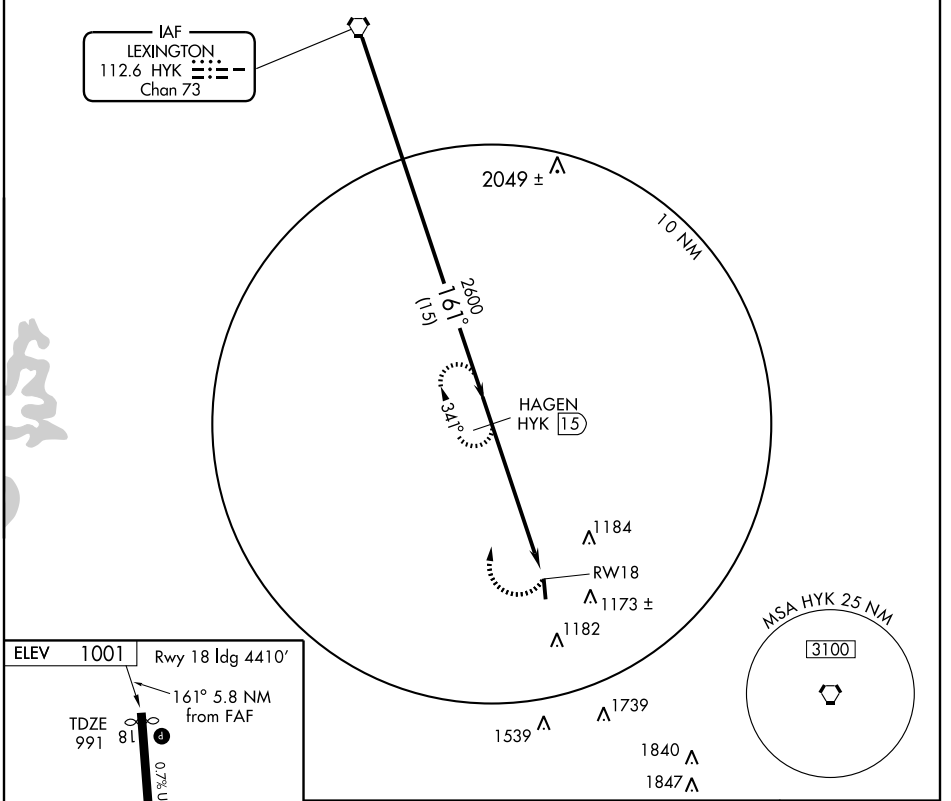
VOR/DME or GPS RWY 18

RICHMOND/MADISON (I39)

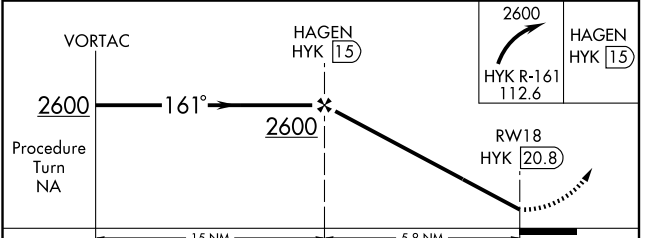
VORTAC HYK 112.6 Chan 73	APP CRS 161°	Rwy ldg TDZE Apt Elev	4410 991 1001
--	------------------------	-----------------------------	--

▲ NA Use Lexington altimeter setting. MISSED APPROACH: Climbing right turn to 2600 via HYK R-161 to HAGEN/15 DME and hold.

AWOS-3 119,625	LEXINGTON APP CON 120.15 259.3	UNICOM 122.8 (CTAF) ①
--------------------------	--	--



ELEV	1001	Rwy 18 ldg	4410'
TDZE	991		
MIRL Rwy 18-36 ① REIL Rwys 18 and 36 ①			
Knots	60	90	120
Min:Sec			



CATEGORY	A	B	C	D
S-18	1520-1 529 (600-1)	1520-1¼ 529 (600-1¼)	1520-1½ 529 (600-1½)	NA
CIRCLING	1540-1 539 (600-1)	1540-1¼ 539 (600-1¼)	1540-1½ 539 (600-1½)	NA

RICHMOND, KENTUCKY
Amdt 5 08157

37°38'N-84°20'W

VOR/DME or GPS RWY 18

SE-1, 19 NOV 2009 to 17 DEC 2009

SE-1, 19 NOV 2009 to 17 DEC 2009