

EL PASO, TEXAS

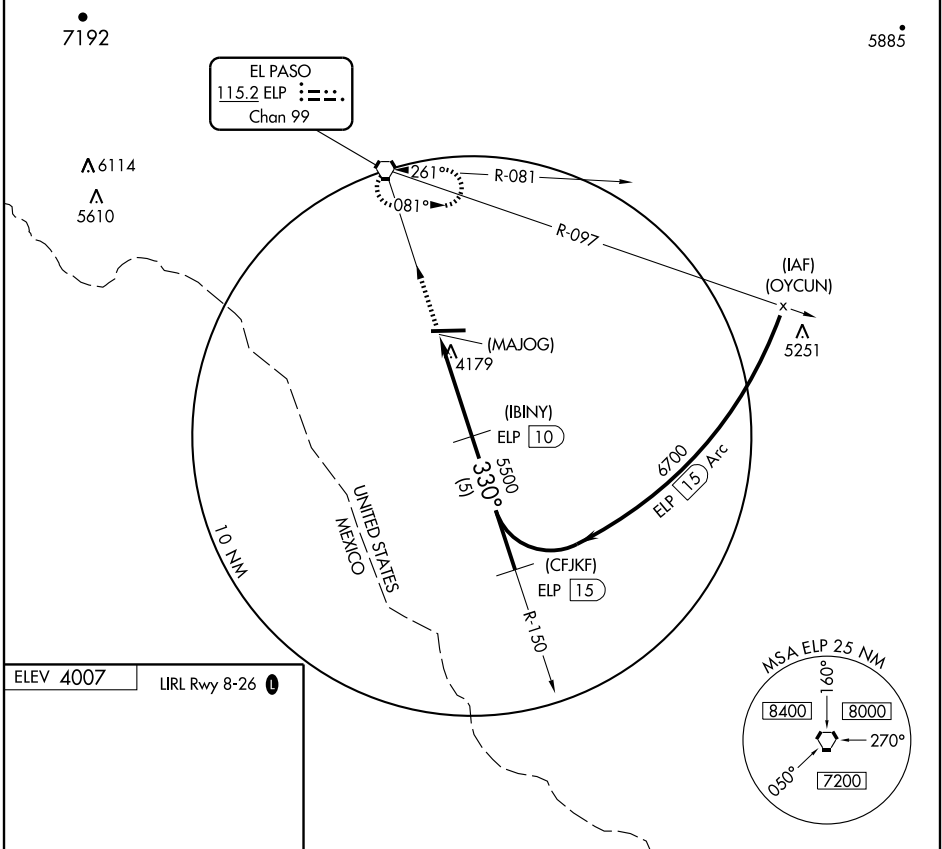
AL-6627 (FAA)

VOR/DME or GPS-A

EL PASO/HORIZON (T27)

VORTAC ELP 115.2 Chan 99	APP CRS 330°	Rwy Idg TDZE Apt Elev	N/A N/A 4007
--	------------------------	-----------------------------	---------------------------

▲ NA Use El Paso Intl altimeter setting. Procedure not authorized at night.	MISSED APPROACH: Climb to 6500 direct ELP VORTAC and hold.
EL PASO APP CON 119.15	UNICOM 123.0 (CTAF) 0



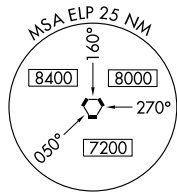
SC-3, 19 NOV 2009 to 17 DEC 2009

SC-3, 19 NOV 2009 to 17 DEC 2009

ELEV 4007 LIRL Rwy 8-26

330° 3.8 NM from FAF

6500	ELP 115.2	(IBINY) ELP 10	(CFJKF) ELP 15	
↑		330°	6700	
	(MAJOG) ELP 6.2	5500	Procedure Turn NA	
	3.8 NM	5 NM		
CATEGORY	A	B	C	D
CIRCLING	4520-1	513 (600-1)		NA



EL PASO, TEXAS
Amdt 4B 09071

31°43'N-106°14'W

VOR/DME or GPS-A

EL PASO/HORIZON (T27)