

MONTICELLO, KENTUCKY

AL-6629 (FAA)

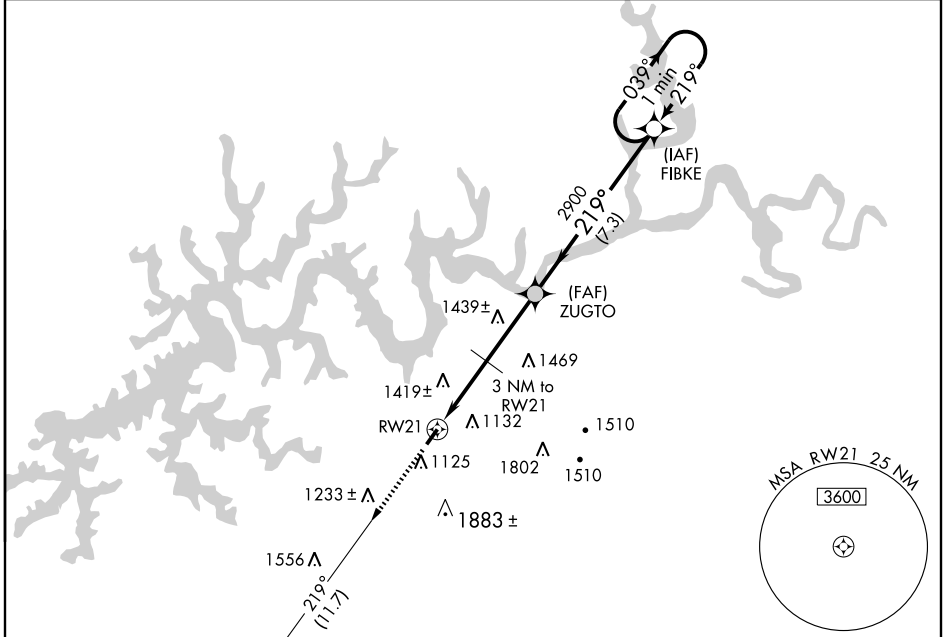
# GPS RWY 21

MONTICELLO/ WAYNE COUNTY (EKQ)

APP CRS <b>219°</b>	Rwy Idg <b>4000</b>
	TDZE <b>963</b>
	Apt Elev <b>963</b>

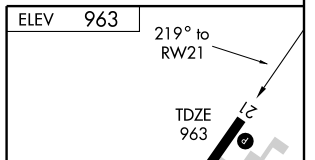
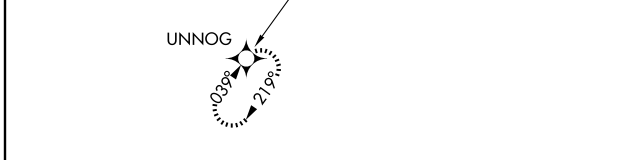
<p>Use Somerset altimeter setting; when not received, procedure not authorized.</p>	<p>MISSED APPROACH: Climb to 4000 via 219° course to UNNOG WP and hold.</p>
-------------------------------------------------------------------------------------	-----------------------------------------------------------------------------

ASOS <b>118.825</b>	INDIANAPOLIS CENTER <b>124.625 371.925</b>	UNICOM <b>122.8 (CTAF) 0</b>
------------------------	-----------------------------------------------	---------------------------------



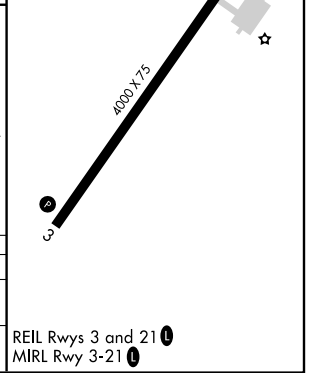
SE-1, 11 MAR 2010 to 08 APR 2010

SE-1, 11 MAR 2010 to 08 APR 2010



4000	UNNOG	FIBKE	One Minute Holding Pattern
CRS 219°			
	RWY21	ZUGTO	4000
	3 NM to RWY21	2900	039° →
	1740		← 219°
	3 NM	3 NM	7.3 NM

CATEGORY	A	B	C	D
S-21	1680-1	717 (800-1)	1680-2 717 (800-2)	1680-2¼ 717 (800-2¼)
CIRCLING	1820-1 857 (900-1)	1820-1¼ 857 (900-1¼)	1820-2½ 857 (900-2½)	2060-3 1097 (1100-3)



MONTICELLO, KENTUCKY  
Orig 09239

36°51'N-84°51'W

MONTICELLO/ WAYNE COUNTY (EKQ)

# GPS RWY 21