

PARKER, ARIZONA

AL-6633 (FAA)

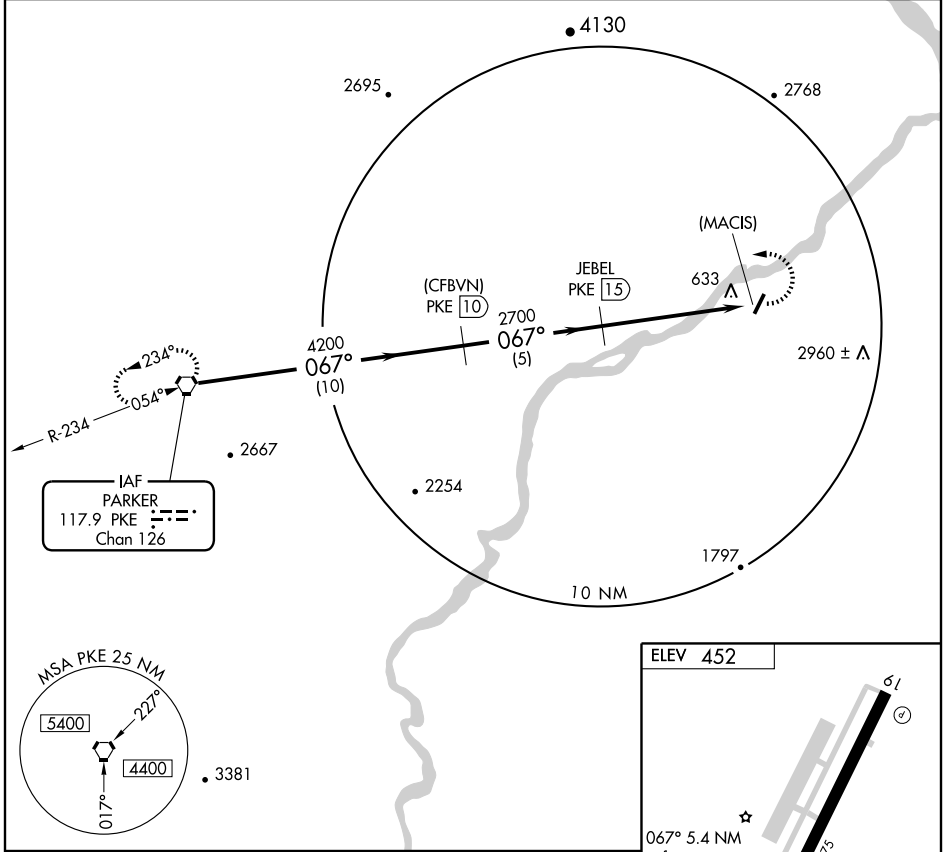
VORTAC PKE 117.9 Chan 126	APP CRS 067°	Rwy Idg TDZE Apt Elev	N/A N/A 452
---	------------------------	-----------------------------	--

VOR/DME or GPS-A

PARKER/ AVI SUQUILLA (P20)

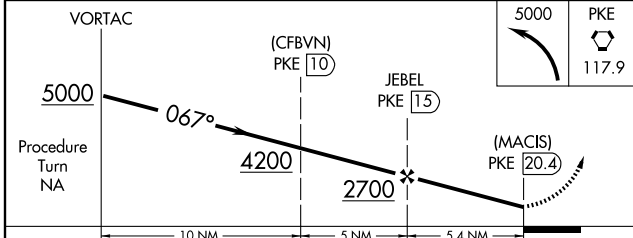
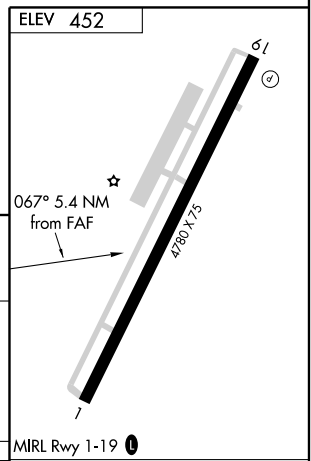
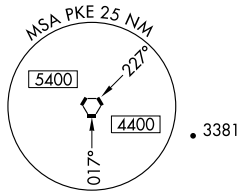
▼ Use Blythe, CA altimeter setting; when not received, procedure not authorized.
▲ NA MISSED APPROACH: Climbing left turn to 5000 direct PKE VORTAC and hold.

LOS ANGELES CENTER **128.15 285.6** UNICOM **122.725 (CTAF) 0**



SW-4, 19 NOV 2009 to 17 DEC 2009

SW-4, 19 NOV 2009 to 17 DEC 2009



CATEGORY	A	B	C	D	MIRL Rwy 1-19 0	
CIRCLING	1900-1¼ 1448 (1500-1¼)	1900-1½ 1448 (1500-1½)	1900-3 1448 (1500-3)	NA		
	Knots	60	90	120		150
	Min:Sec					

PARKER, ARIZONA
Amdt 2B 03359

34°09'N-114°16'W

VOR/DME or GPS-A

PARKER/ AVI SUQUILLA (P20)