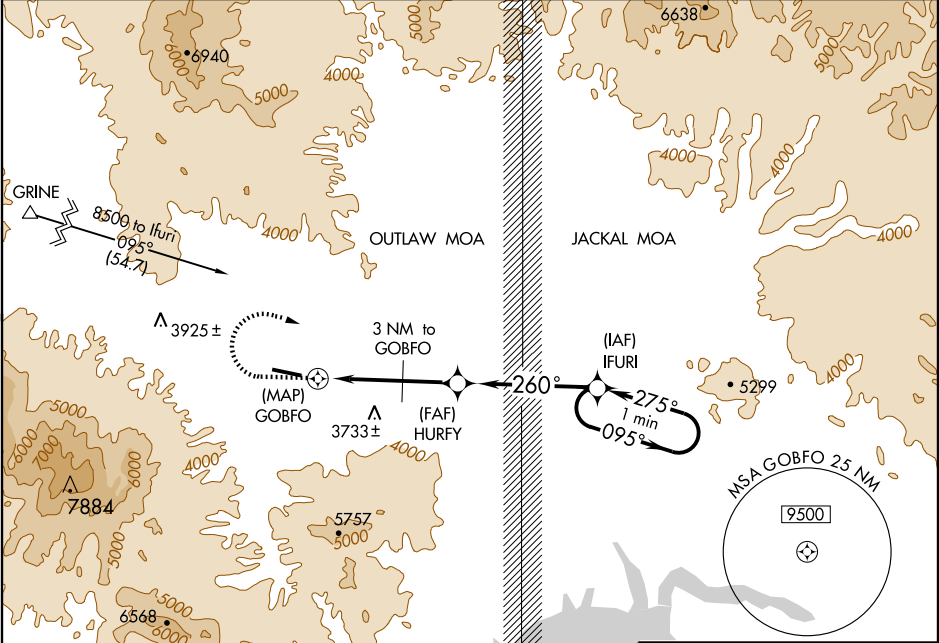


GPS RWY 27
GLOBE/SAN CARLOS APACHE (P13)

APP CRS	Rwy Idg	6500
260°	TDZE	3200
	Apt Elev	3235

<p>NA Obtain local altimeter setting on CTAF; when not received, procedure not authorized.</p>	<p>MISSED APPROACH: Climb to 4200, then climbing right turn to 6500 direct IFURI WP and hold.</p>
---	--

<p>AWOS-3 120.075</p>	<p>ALBUQUERQUE CENTER 125.4 269.3</p>	<p>UNICOM 122.8 (CTAF)</p>
----------------------------------	--	---------------------------------------



SW-4, 19 NOV 2009 to 17 DEC 2009

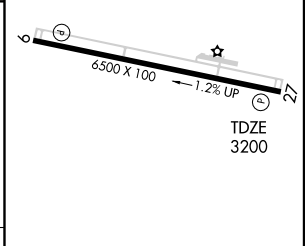
SW-4, 19 NOV 2009 to 17 DEC 2009

ELEV 3235		
-----------	--	--



4200	6500	IFURI	
↑	↷	✧	One Minute Holding Pattern
<p>HURFY</p> <p>3 NM to GOBFO</p> <p>IFURI</p> <p>095° → 6500</p> <p>← 275°</p> <p>5000</p> <p>4340</p> <p>GOBFO</p> <p>0.5 3 NM 2 NM 5 NM</p>			

CATEGORY	A	B	C	D
S-27	3780-1	580 (600-1)		NA
CIRCLING	3980-1 745 (800-1)	3980-1¼ 745 (800-1¼)		NA



MIRL Rwy 9-27 **0**
REIL Rwys 9 and 27