

(IZTIR2.IZTIR) 08101

SL-6635 (FAA)

GLOBE/SAN CARLOS APACHE (P13)
GLOBE, ARIZONA

IZTIR TWO DEPARTURE (RNAV) (OBSTACLE)

ALBUQUERQUE CENTER
125.4 269.3
PRESCOTT RADIO
122.4

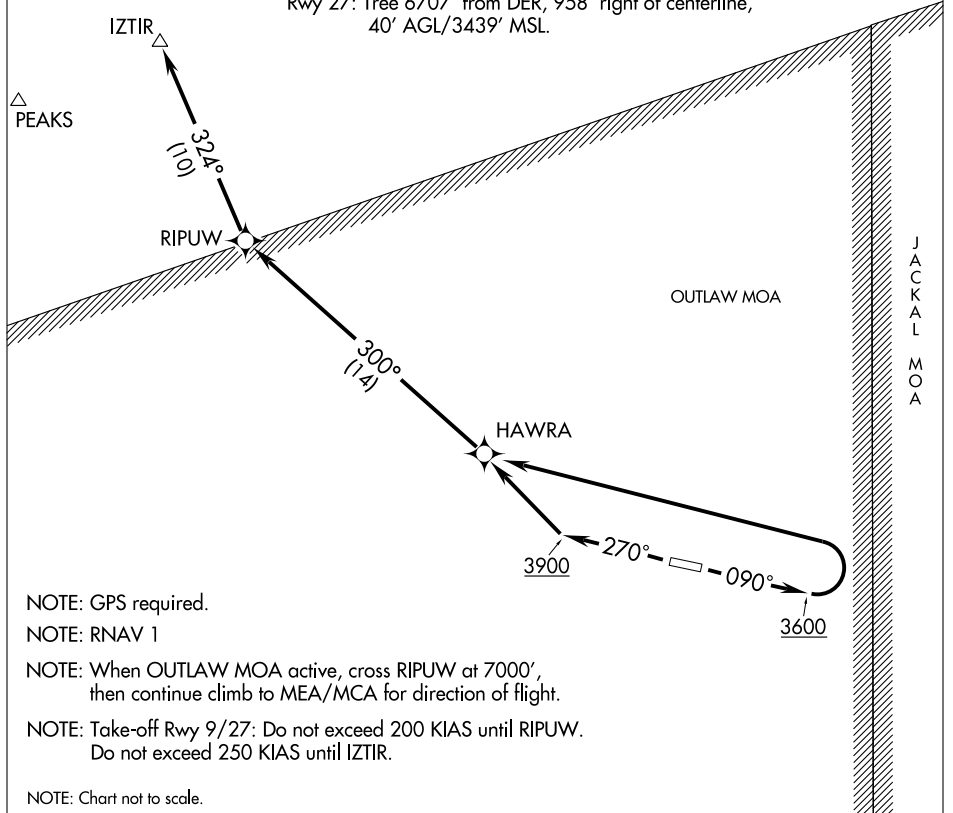
△ SALTS

TAKE-OFF MINIMUMS

Rwy 9: Standard with minimum climb of 409' per NM to 6900.
Rwy 27: Standard with minimum climb of 370' per NM to 5500.

TAKE-OFF OBSTACLE NOTES

Rwy 9: Numerous trees beginning 566' from DER, 126' right of centerline, up to 40' AGL/3289' MSL.
Rwy 27: Tree 6707' from DER, 958' right of centerline, 40' AGL/3439' MSL.



NOTE: GPS required.

NOTE: RNAV 1

NOTE: When OUTLAW MOA active, cross RIPUW at 7000', then continue climb to MEA/MCA for direction of flight.

NOTE: Take-off Rwy 9/27: Do not exceed 200 KIAS until RIPUW. Do not exceed 250 KIAS until IZTIR.

NOTE: Chart not to scale.



DEPARTURE ROUTE DESCRIPTION

TAKE-OFF RUNWAY 9: Climb heading 090° to 3600, then climbing left turn direct HAWRA, then via depicted route to IZTIR. Thence....

TAKE-OFF RUNWAY 27: Climb heading 270° to 3900, then climbing right turn direct HAWRA, then via depicted route to IZTIR. Thence....

....climb on course to MEA for assigned route of flight.

IZTIR TWO DEPARTURE (RNAV) (OBSTACLE)

(IZTIR2.IZTIR) 08101

GLOBE, ARIZONA
GLOBE/SAN CARLOS APACHE (P13)

SW-4, 19 NOV 2009 to 17 DEC 2009

SW-4, 19 NOV 2009 to 17 DEC 2009