

MC KINNEY, TEXAS

AL-6644 (FAA)

WAAS Ch 58199 W35A	APP CRS 356°	Rwy Idg TDZE Apt Elev	7001 585 585
--	------------------------	-----------------------------	---

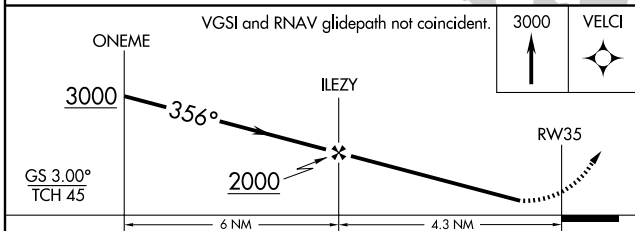
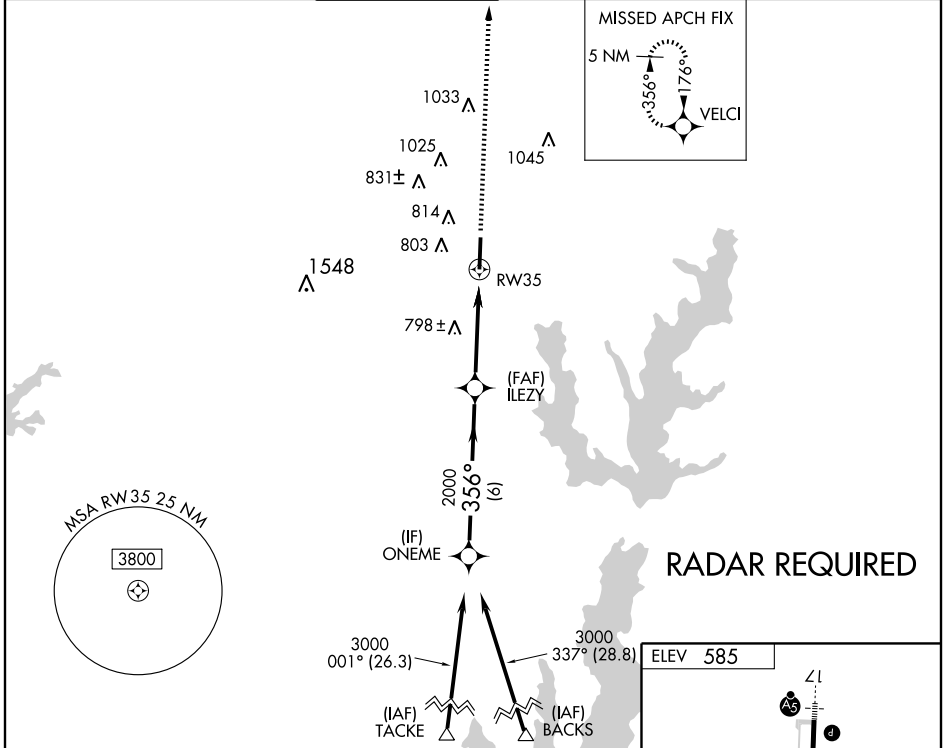
RNAV (GPS) RWY 35

MC KINNEY/ COLLIN COUNTY RGNL AT MC KINNEY (TKI)

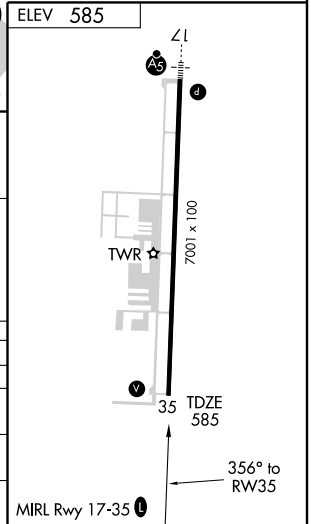
▽ DME/DME RNP-0.3 NA. If local altimeter setting not received, use
▲ Dallas Love Field altimeter setting and increase all DAs/MDAs 80 feet.

MISSED APPROACH: Climb to 3000
direct VELCI and hold.

ASOS 119.925	REGIONAL APP CON 124.3 282.275	MC KINNEY TOWER ★ 118.825 (CTAF) 0	GND CON 121.875	CLNC DEL ★ 121.35	UNICOM 122.95
------------------------	--	---	---------------------------	-----------------------------	-------------------------



CATEGORY	A	B	C	D
LPV DA	867-1 282 (300-1)			
LNAV/DA VNAV	NA			
LNAV MDA	1060-1 475 (500-1)	1060-1½ 475 (500-1½)	1060-1½ 475 (500-1½)	1060-1½ 475 (500-1½)
CIRCLING	1120-1 535 (600-1)	1120-1½ 535 (600-1½)	1200-2 615 (700-2)	



SC-2, 19 NOV 2009 to 17 DEC 2009

SC-2, 19 NOV 2009 to 17 DEC 2009

MC KINNEY, TEXAS
Orig 09183

MC KINNEY/ COLLIN COUNTY RGNL AT MC KINNEY (TKI)
33°11'N-96°35'W

RNAV (GPS) RWY 35