

MC KINNEY, TEXAS

AL-6644 (FAA)

VORTAC BYP <b>114.6</b> Chan <b>93</b>	APP CRS <b>212°</b>	Rwy Idg TDZE Apt Elev	<b>N/A</b> <b>N/A</b> <b>585</b>
--	------------------------	-----------------------------	--

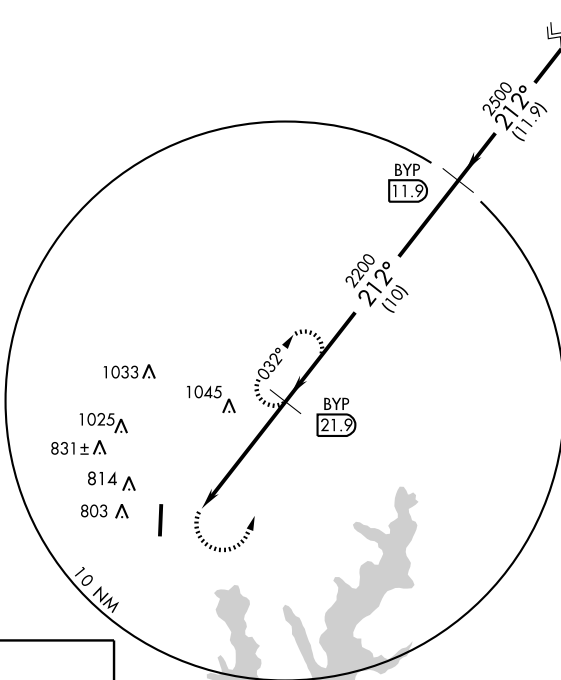
VOR/DME-A

MC KINNEY/ COLLIN COUNTY RGNL AT MC KINNEY (TKI)

MISSED APPROACH: Climbing left turn to 2200 direct  
BYP R-212/21.9 DME and hold.

ASOS <b>119.925</b>	REGIONAL APP CON <b>124.3 282.275</b>	MC KINNEY TOWER ★ <b>118.825</b> (CTAF) <b>0</b>	GND CON <b>121.875</b>	CLNC DEL <b>121.35 *</b>	UNICOM <b>122.95</b>
------------------------	--	---	---------------------------	-----------------------------	-------------------------

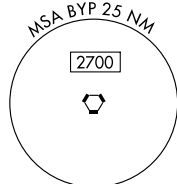
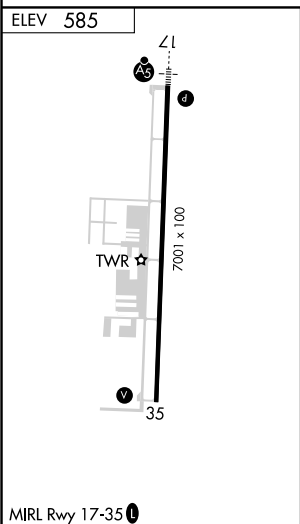
△ 1632±



IAF  
BONHAM  
114.6 BYP  
Chan 93

SC-2, 19 NOV 2009 to 17 DEC 2009

SC-2, 19 NOV 2009 to 17 DEC 2009



2200 BYP R-212	BYP 21.9	BYP 11.9	VORTAC Procedure Turn NA
BYP 26.9		BYP 21.9	212° → 2500
5 NM		10 NM	11.9 NM
CATEGORY	A	B	C
CIRCLING	1360-1 775 (800-1)	1360-1¼ 775 (800-1¼)	1360-2¼ 775 (800-2¼)
			D
			1360-2½ 775 (800-2½)

MC KINNEY, TEXAS  
Orig-D 09183

MC KINNEY/ COLLIN COUNTY RGNL AT MC KINNEY (TKI)  
33°11'N-96°35'W

VOR/DME-A