

MC KINNEY, TEXAS

AL-6644 (FAA)

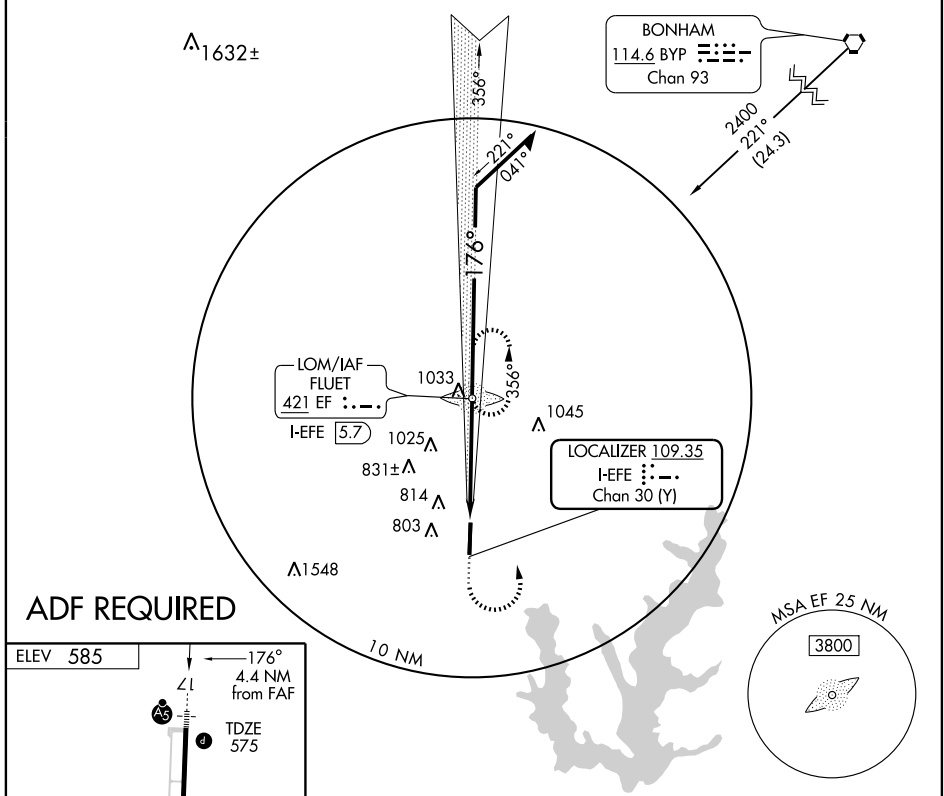
# ILS RWY 17

MC KINNEY/ COLLIN COUNTY RGNL AT MC KINNEY (TKI)

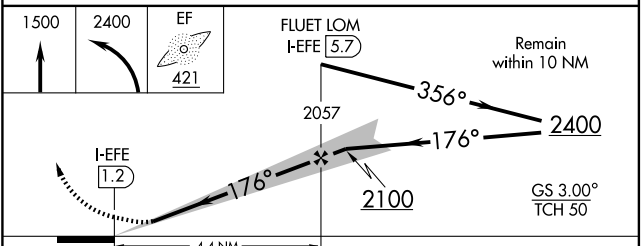
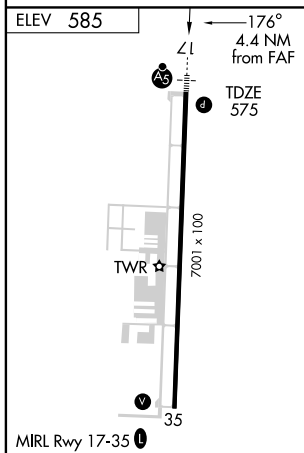
LOC I-EFE <b>109.35</b> Chan <b>30 (Y)</b>	APP CRS <b>176°</b>	Rwy Idg TDZE Apt Elev	<b>7001</b> <b>575</b> <b>585</b>
--	------------------------	-----------------------------	---

	MALSR 	MISSED APPROACH: Climb to 1500, then climbing left turn to 2400 direct FLUET LOM and hold.
--	-----------	--

ASOS <b>119.925</b>	REGIONAL APP CON <b>124.3 282.275</b>	MC KINNEY TOWER ★ <b>118.825</b> (CTAF)	GND CON <b>121.875</b>	CLNC DEL ★ <b>121.35</b>	UNICOM <b>122.95</b>
------------------------	--	--	---------------------------	-----------------------------	-------------------------



**ADF REQUIRED**



CATEGORY	A	B	C	D
S-ILS 17	775-½ 200 (200-½)			
S-LOC 17	1000-½	425 (500-½)	1000-¾	425 (500-¾)
CIRCLING	1120-1	535 (600-1)	1120-1½	1200-2
			535 (600-1½)	615 (700-2)

MC KINNEY, TEXAS  
Amdt 2A 09183

MC KINNEY/ COLLIN COUNTY RGNL AT MC KINNEY (TKI)  
33°11'N-96°35'W

# ILS RWY 17

SC-2, 19 NOV 2009 to 17 DEC 2009

SC-2, 19 NOV 2009 to 17 DEC 2009