

# RNAV (GPS)-B

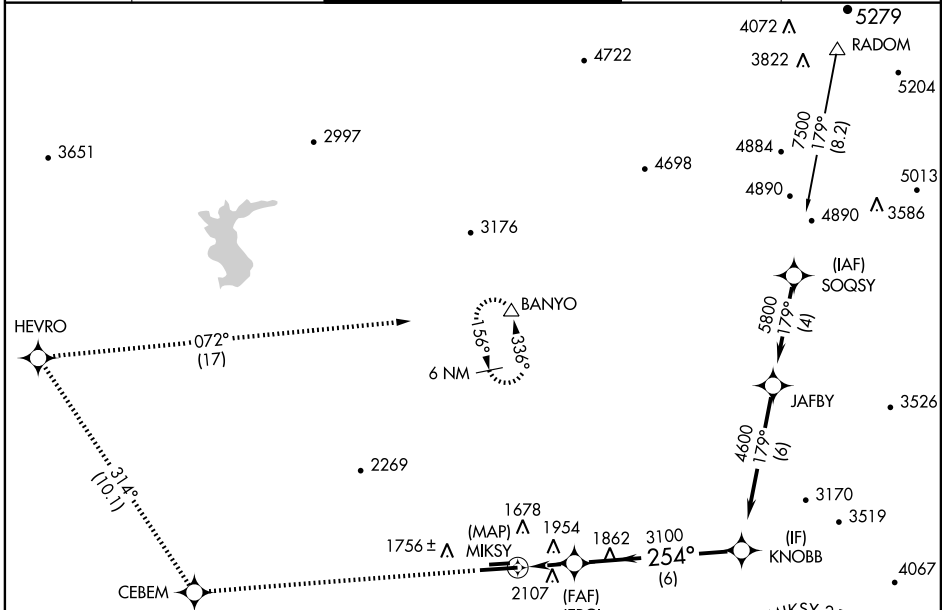
PHOENIX DEER VALLEY (DVT)

APP CRS <b>254°</b>	Rwy Idg TDZE Apt Elev	<b>N/A</b> <b>N/A</b> <b>1478</b>
------------------------	-----------------------------	---

**▽** DME/DME RNP-0.3 NA.  
**▲** When VGSI inop, circling to Rwy 25R NA at night.  
 Circling not authorized at night north of Rwy 7R-25L.  
 If local altimeter setting not received, use Phoenix Sky Harbor Intl altimeter setting and increase all MDAs 100 feet.

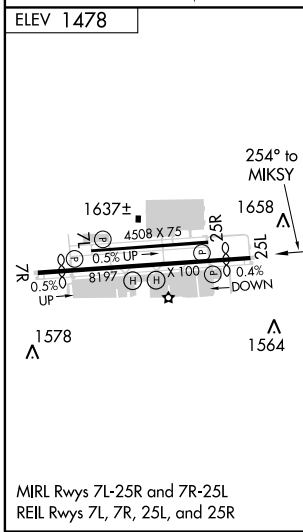
MISSED APPROACH: Climb to 6000 direct CEBEM and via 314° track to HEVRO, and right turn via 072° track to BANYO and hold.

ATIS <b>126.5</b>	PHOENIX APP CON <b>120.7 239.0</b>	DEER VALLEY TOWER ★ <b>118.4 (CTAF) 120.2</b> (Rwy 7R-25L) (Rwy 7L-25R)	GND CON <b>121.8</b>	CLNC DEL <b>123.9</b>
----------------------	---------------------------------------	---	-------------------------	--------------------------



SW-4, 19 NOV 2009 to 17 DEC 2009

SW-4, 19 NOV 2009 to 17 DEC 2009



ELEV 1478	6000	CEBEM	314° track	HEVRO	BANYO	4600
254° to MIKSY	↑	✦	↖	✦	△	Procedure Turn NA
254°	JERGI		254°	KNOBB		
MIKSY	TCH 40		3100			
2 NM	6 NM					
CATEGORY	A	B	C	D		
CIRCLING	2400-1¼ 922 (1000-1¼)	2420-1¼ 942 (1000-1¼)	2420-2¾ 942 (1000-2¾)	NA		