

RNAV (GPS)-C

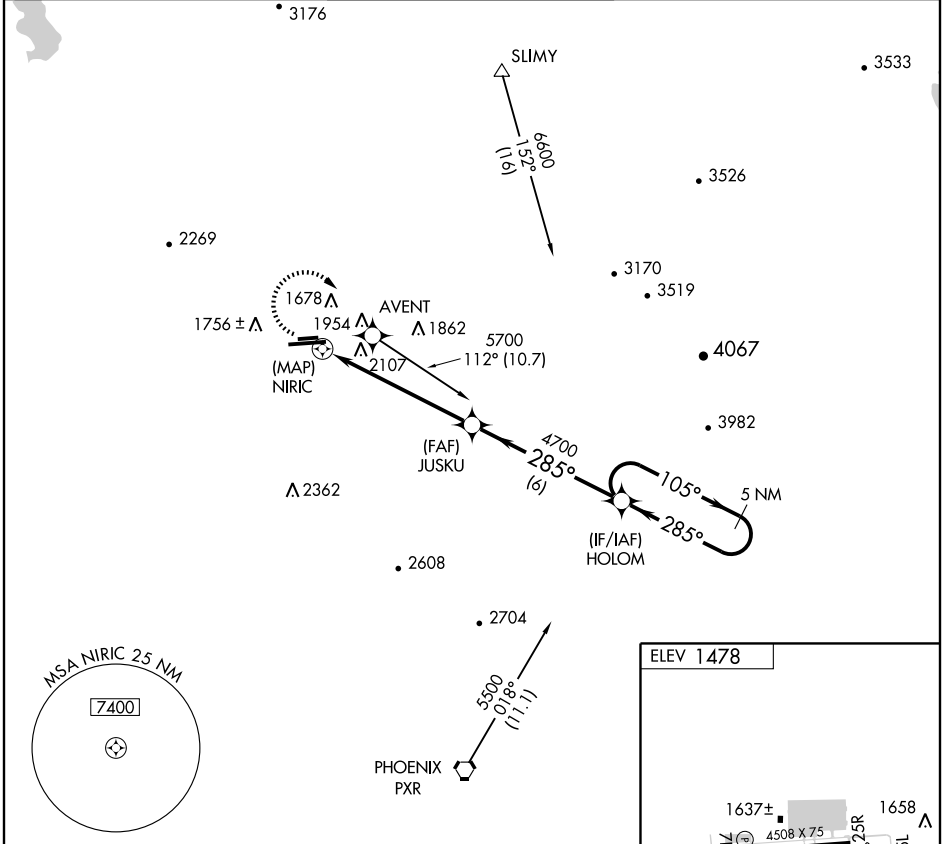
PHOENIX DEER VALLEY (DVT)

APP CRS 285°	Rwy Idg TDZE Apt Elev	N/A N/A 1478
------------------------	-----------------------------	-----------------------------------------

▽ DME/DME RNP-0.3 NA.
▲ Circling not authorized north of Rwy 7R-25L at night.
 When VGSI inoperative, circling to Rwy 25R not authorized at night.

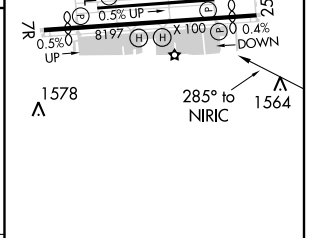
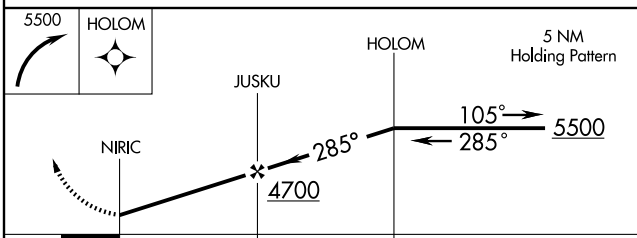
MISSED APPROACH: Climbing right turn to 5500 direct HOLOM and hold, continue climb-in-hold to 5500.

ATIS 126.5	PHOENIX APP CON 120.7 239.0	DEER VALLEY TOWER * 118.4 (CTAF) 120.2 (Rwy 7R-25L) (Rwy 7L-25R)	GND CON 121.8	CLNC DEL 123.9
----------------------	---------------------------------------	-------------------------------------------------------------------------------	-------------------------	--------------------------



SW-4, 19 NOV 2009 to 17 DEC 2009

SW-4, 19 NOV 2009 to 17 DEC 2009



CATEGORY	A	B	C	D
CIRCLING	2400-1¼ 922 (1000-1¼)	2420-1¼ 942 (1000-1¼)	2420-2¾ 942 (1000-2¾)	2480-3 1002 (1100-3)

MIRL Rwy 7L-25R and 7R-25L
 REIL Rwy 7L, 7R, 25L, and 25R