

RNAV (GPS) RWY 25L

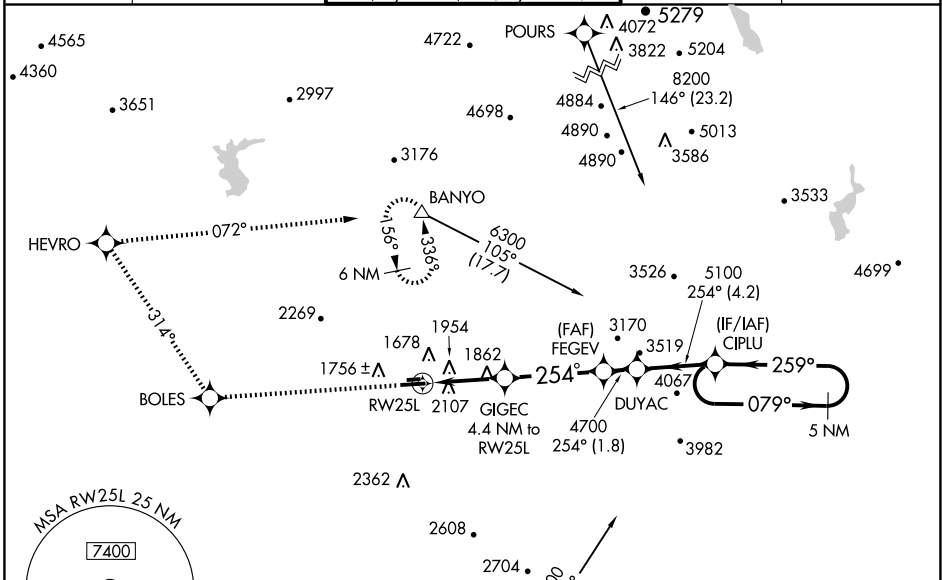
PHOENIX DEER VALLEY (DVT)

WAAS CH 90117 W25A	APP CRS 254°	Rwy Idg 7280 TDZE 1475 Apt Elev 1478
--	------------------------	---

⚠ DME/DME RNP-0.3 NA. Visibility reduction by helicopters NA.
⚠ Circling not authorized north of Rwy 7R-25L at night.
 When VGSI inoperative, circling to Rwy 25R not authorized at night.
 If local altimeter setting not received, use Phoenix Sky Harbor Intl altimeter setting and increase all DAs/MDAs 100 feet.
 VDP NA when using Phoenix Sky Harbor Intl altimeter setting.

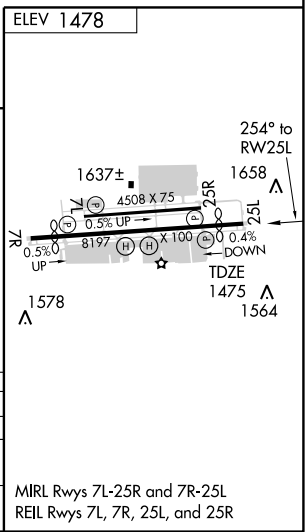
MISSED APPROACH: Climb to 6000 direct BOLES, and via 314° track to HEVRO, and right turn via 072° track to BANYO and hold.

ATIS 126.5	PHOENIX APP CON 120.7 239.0	DEER VALLEY TOWER* 118.4 (CTAF) 120.2 (Rwy 7R-25L) (Rwy 7L-25R)	GND CON 121.8	CLNC DEL 123.9
----------------------	---------------------------------------	--	-------------------------	--------------------------



SW-4, 19 NOV 2009 to 17 DEC 2009

SW-4, 19 NOV 2009 to 17 DEC 2009



* LNAV only	GIGEC 4.4 NM to RW25L	FEGEV	DUYAC	CIPLU	5 NM Holding Pattern
	* 2.7 NM to RW25L				
	2940	4700	5100	5600	
CATEGORY	A	B	C	D	
LPV DA	1850-1¼		375 (400-1¼)		
LNAV MDA	2360-1¼	885 (900-1¼)	2360-2¾	885 (900-2¾)	2360-3
CIRCLING	2400-1¼	2420-1¼	2420-2¾	2420-3	
	922 (1000-1¼)	942 (1000-1¼)	942 (1000-2¾)	942 (1000-3)	