

# RNAV (GPS) RWY 7R

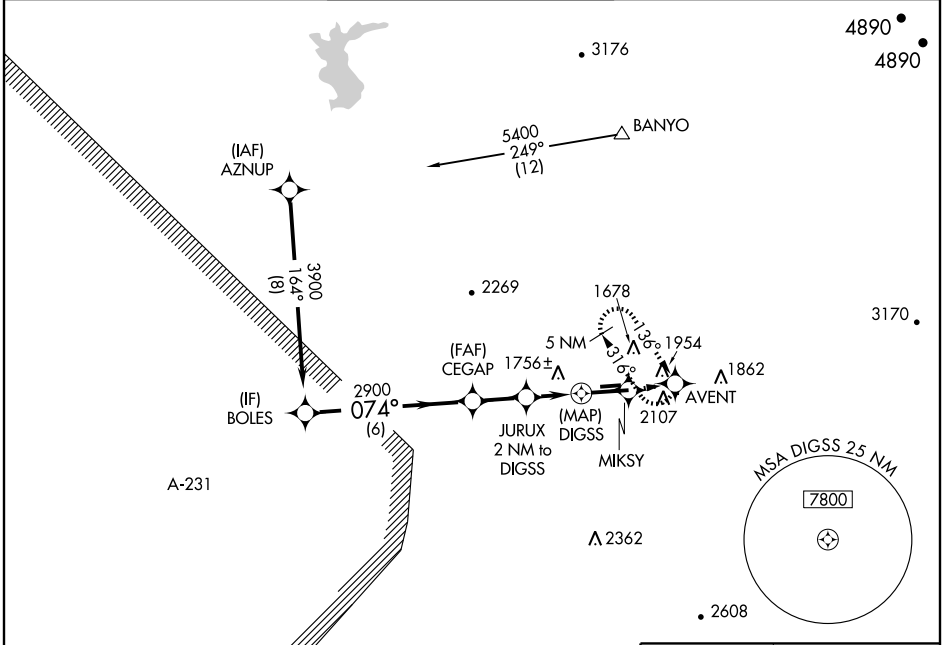
PHOENIX DEER VALLEY (DVT)

APP CRS <b>074°</b>	Rwy Idg <b>7299</b>
	TDZE <b>1460</b>
	Apt Elev <b>1478</b>

**▽** DME/DME RNP-0.3 NA.  
**▲** Circling not authorized north of Rwy 7R-25L at night.  
 When VGSI inoperative, circling to Rwy 25R not authorized at night.

**MISSED APPROACH:** Climb to 5000 direct MIKSY and via 070° track to AVENT and hold, continue climb-in-hold to 5000.

ATIS <b>126.5</b>	PHOENIX APP CON <b>120.7 239.0</b>	DEER VALLEY TOWER* <b>118.4 (CTAF) 120.2</b> (Rwy 7R-25L) (Rwy 7L-25R)	GND CON <b>121.8</b>	CLNC DEL <b>123.9</b>
----------------------	---------------------------------------	--	-------------------------	--------------------------

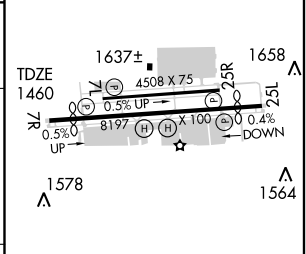


SW-4, 11 MAR 2010 to 08 APR 2010

SW-4, 11 MAR 2010 to 08 APR 2010



	BOLES	CEGAP	JURUX 2 NM to DIGSS	5000	MIKSY	070° track	AVENT
Procedure Turn	NA						
	3900	2900	2280				
	6 NM		1.9 NM	0.7	1.3	0.5	



CATEGORY	A	B	C	D
LNAV MDA	2060-1	600 (600-1)	2060-1½ 600 (600-1½)	2060-1¾ 600 (600-1¾)
CIRCLING	2400-1¼ 922 (1000-1¼)	2420-1¼ 942 (1000-1¼)	2420-2¾ 942 (1000-2¾)	2420-3 942 (1000-3)

MIRL Rwy 7L-25R and 7R-25L  
 REIL Rwy 7L, 7R, 25L, and 25R