

MESA, ARIZONA

AL-6647 (FAA)

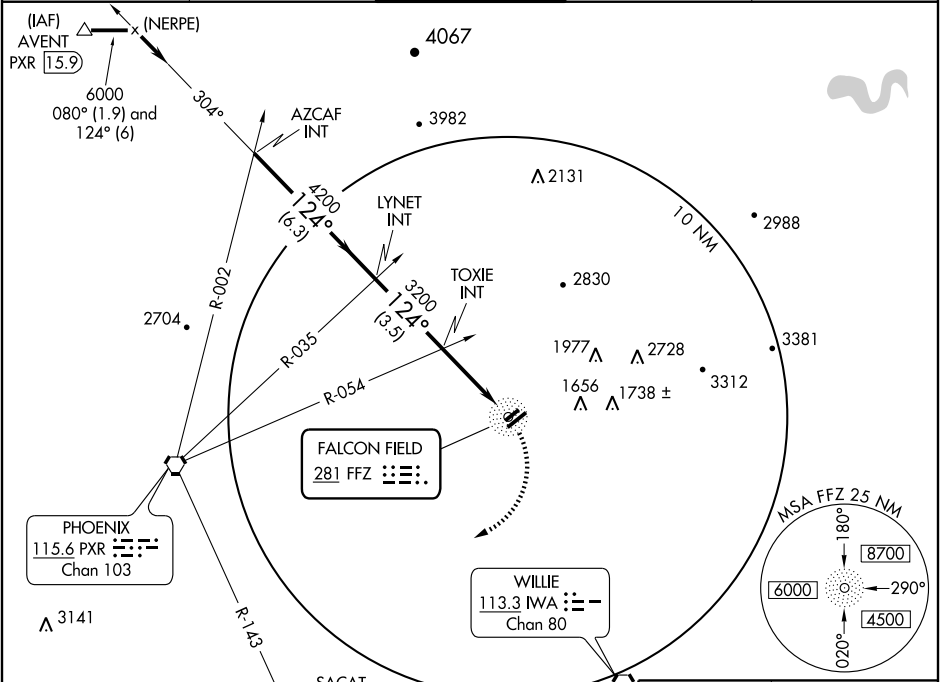
NDB or GPS-A MESA/FALCON FIELD (F'F'Z)

NDB FFZ 281	APP CRS 124°	Rwy Idg TDZE Apt Elev N/A N/A 1392
-----------------------	------------------------	------------------------------------------------------------------------

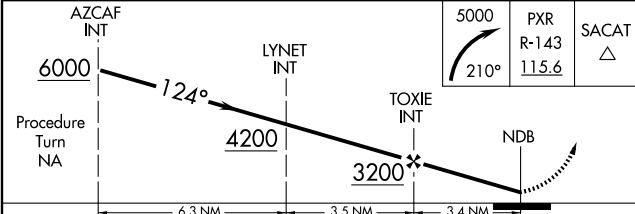
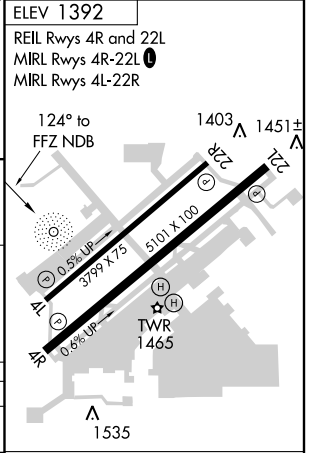
When local altimeter setting not received, use Phoenix Sky Harbor altimeter setting minimums.

MISSED APPROACH: Climbing right turn to 5000 via heading 210° and PXR R-143 to SACAT Int/PXR 11.6 DME and hold.

ATIS 118.25	PHOENIX APP CON 120.7 239.0	FALCON TOWER * 124.6 (CTAF)	GND CON 121.3	UNICOM 122.95
-----------------------	---------------------------------------	---------------------------------------	-------------------------	-------------------------



ELEV 1392	REIL Rwy 4R and 22L	MIRL Rwy 4R-22L	MIRL Rwy 4L-22R
-----------	---------------------	-----------------	-----------------



CATEGORY	A	B	C	D
CIRCLING	1860-1	468 (500-1)	1880-1½ 488 (500-1½)	NA
PHOENIX SKY HARBOR ALTIMETER SETTING MINIMUMS				
CIRCLING	1920-1	528 (600-1)	1940-1½ 548 (600-1½)	NA

Knots	60	90	120	150	180
Min:Sec					

MESA, ARIZONA
Orig 08157

33°28'N-111°44'W

MESA/FALCON FIELD (F'F'Z)
NDB or GPS-A

SW-4, 19 NOV 2009 to 17 DEC 2009

SW-4, 19 NOV 2009 to 17 DEC 2009