

MESA, ARIZONA

AL-6647 (FAA)

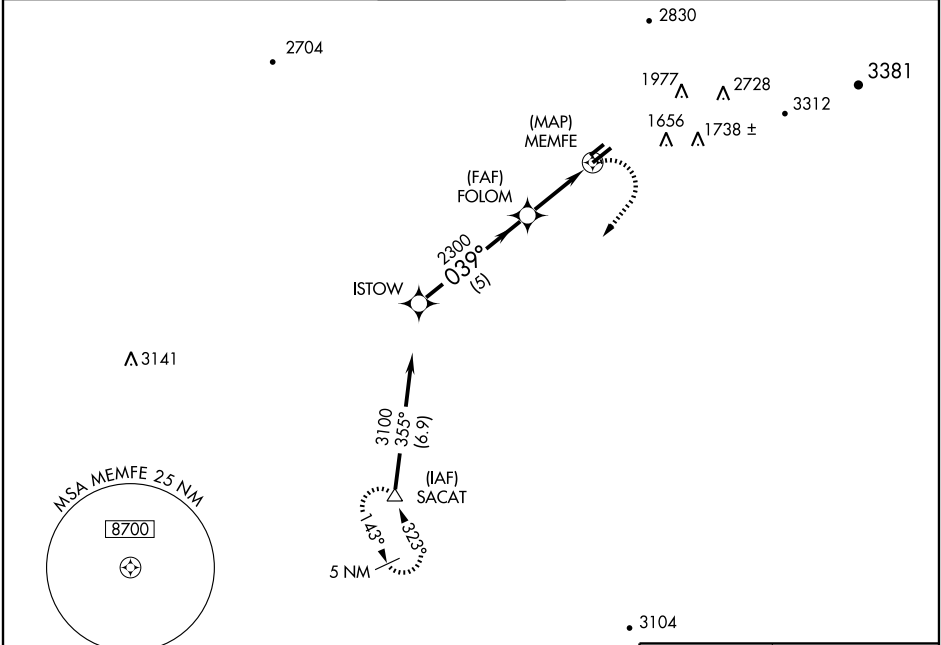
GPS RWY 4R

MESA/FALCON FIELD (F'F'Z)

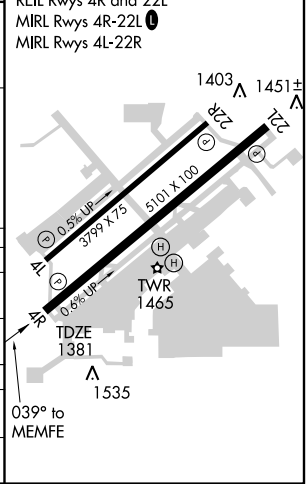
APP CRS 039°	Rwy Idg 5101
	TDZE 1381
	Apt Elev 1392

▽ When control tower closed, use Phoenix Sky Harbor
▲ NA altimeter setting. MISSED APPROACH: Climbing right turn to 5000 direct SACAT WP and hold.

ATIS 118.25	PHOENIX APP CON 120.7 239.0	FALCON TOWER * 124.6 (CTAF)	GND CON 121.3	UNICOM 122.95
-----------------------	---------------------------------------	---------------------------------------	-------------------------	-------------------------



ELEV 1392



CATEGORY	A	B	C	D
S-4R	1800-1	419 (500-1)	1800-1¼ 419 (500-1¼)	NA
CIRCLING	1860-1	468 (500-1)	1860-1½ 468 (500-1½)	NA

PHOENIX SKY HARBOR ALTIMETER SETTING MINIMUMS

CATEGORY	A	B	C	D
S-4R	1860-1	479 (500-1)	1860-1¼ 479 (500-1¼)	NA
CIRCLING	1940-1	548 (600-1)	1940-1½ 548 (600-1½)	NA

SW-4, 19 NOV 2009 to 17 DEC 2009

SW-4, 19 NOV 2009 to 17 DEC 2009

MESA, ARIZONA
Orig 09071

33°28'N-111°44'W

GPS RWY 4R