

ZUNI PUEBLO, NEW MEXICO

AL-6651 (FAA)

VORTAC ZUN <b>113.4</b> Chan 81	APP CRS <b>053°</b>	Rwy Idg TDZE Apt Elev	<b>4807</b> <b>6454</b> <b>6454</b>
---------------------------------------	------------------------	-----------------------------	---

# VOR/DME RWY 6

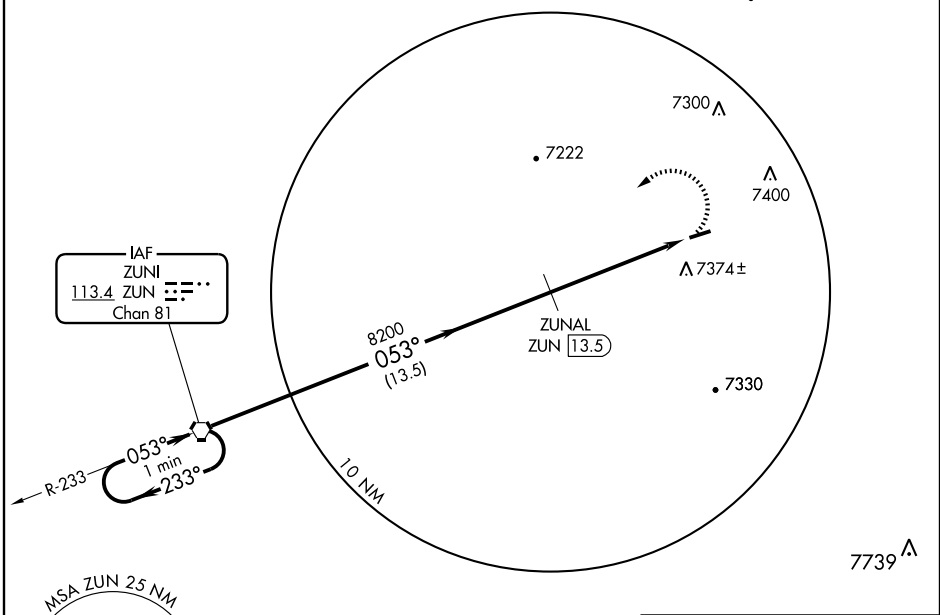
ZUNI PUEBLO/ BLACK ROCK (ZUN)

**NA** Use Gallup, NM altimeter setting; if not received procedure not authorized. MISSED APPROACH: Climbing left turn to 9000 direct ZUN VORTAC and hold.

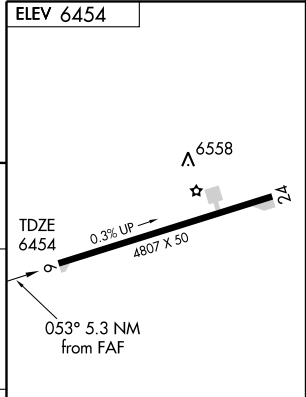
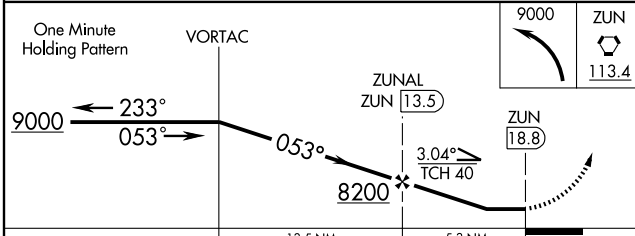
ALBUQUERQUE CENTER <b>124.325 288.25</b>	UNICOM <b>122.8</b>	CTAF <b>122.9</b>
---	------------------------	----------------------

NoPT for arrival on ZUN VORTAC airway radial 261.

SW-1, 19 NOV 2009 to 17 DEC 2009



SW-1, 19 NOV 2009 to 17 DEC 2009



CATEGORY	A	B	C	D
S-6	7820-1¼ 1366 (1400-1¼)	7820-1½ 1366 (1400-1½)	7820-3 1366 (1400-3)	NA
CIRCLING	7860-1¼ 1406 (1500-1¼)	7880-1½ 1426 (1500-1½)	7880-3 1426 (1500-3)	NA

LIRL Rwy 6-24	Knots	60	90	120	150	180
	Min:Sec					

ZUNI PUEBLO, NEW MEXICO  
Amdt 2 05132

35°05'N-108°47'W

ZUNI PUEBLO/BLACK ROCK (ZUN)  
**VOR/DME RWY 6**