

ZUNI PUEBLO, NEW MEXICO

AL-6651 (FAA)

RNAV (GPS) RWY 6

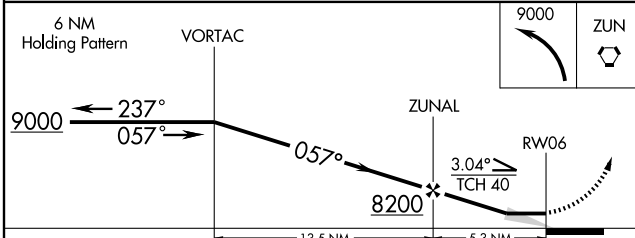
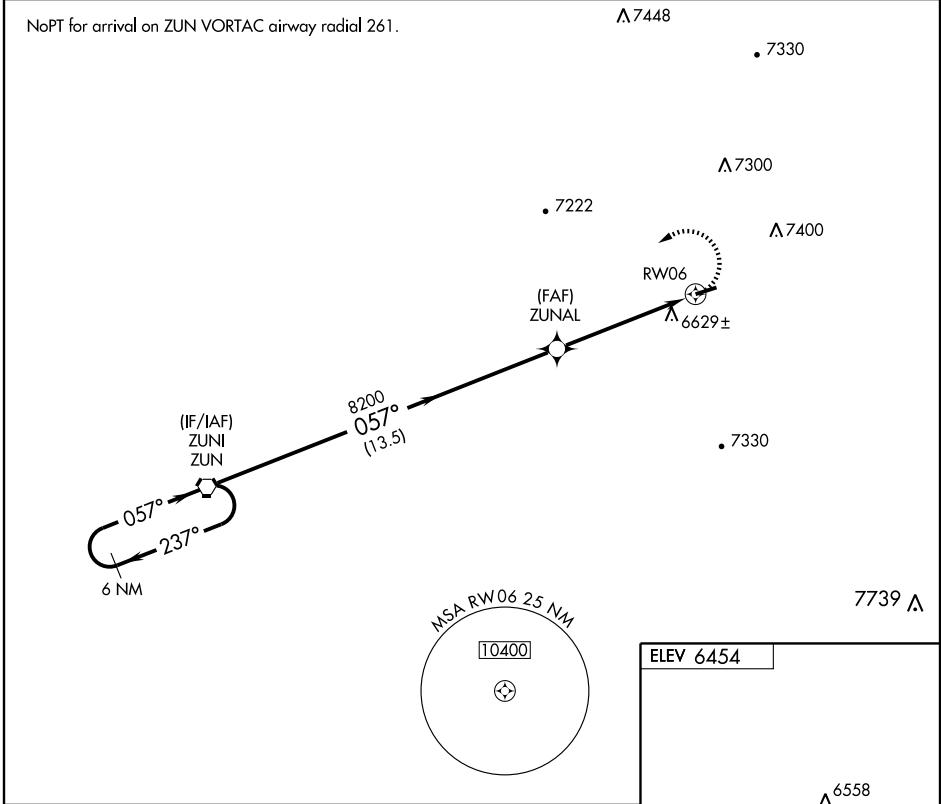
ZUNI PUEBLO/BLACK ROCK (ZUN)

APP CRS 057°	Rwy Idg 4807
	TDZE 6454
	Apt Elev 6454

▽ DME/DME RNP -0.3 NA.
▲ NA Use Gallup, NM altimeter setting; if not received, procedure not authorized.

MISSED APPROACH: Climbing left turn to 9000 direct ZUN VORTAC and hold.

ALBUQUERQUE CENTER 124.325 288.25	UNICOM 122.8	CTAF 122.9
---	------------------------	----------------------



CATEGORY	A	B	C	D
LNVA MDA	7320-1 866 (900-1)	7320-1¼ 866 (900-1¼)	7320-2½ 866 (900-2½)	NA
CIRCLING	7860-1¼ 1406 (1500-1¼)	7880-1½ 1426 (1500-1½)	7880-3 1426 (1500-3)	NA

LURL Rwy 6-24

ZUNI PUEBLO, NEW MEXICO
 Orig 05132

35°05'N-108°47'W

ZUNI PUEBLO/BLACK ROCK (ZUN) RNAV (GPS) RWY 6

SW-1, 11 MAR 2010 to 08 APR 2010

SW-1, 11 MAR 2010 to 08 APR 2010