

LAFAYETTE, TENNESSEE

AL-6653 (FAA)

NDB RWY 19

LAFAYETTE MUNI (3M7)

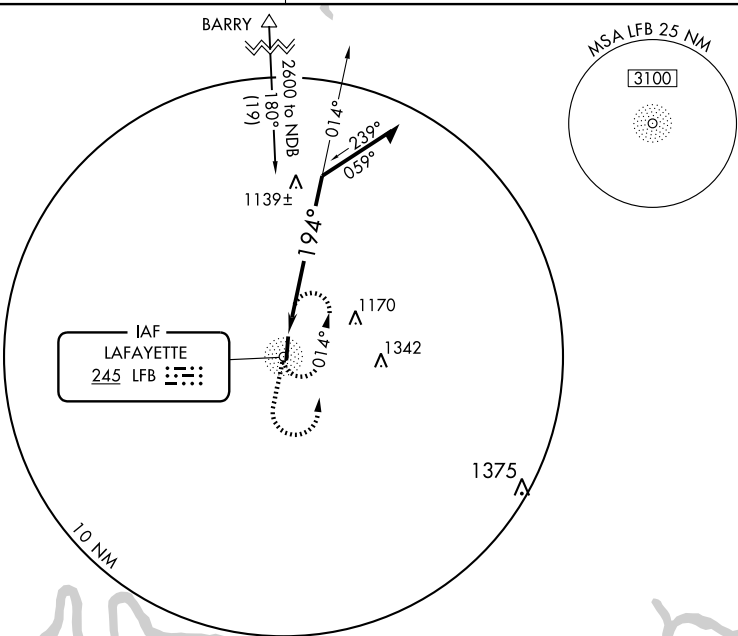
NDB LFB 245	APP CRS 194°	Rwy Idg TDZE Apt Elev	5200 961 969
-----------------------	------------------------	-----------------------------	---

▼ Visibility reduction by helicopters NA. Obtain local altimeter setting on CTAF; when not received, use Bowling Green altimeter setting.
 ▲ NA

MISSED APPROACH: Climb to 2000 then climbing left turn to 2600 direct LFB NDB and hold.

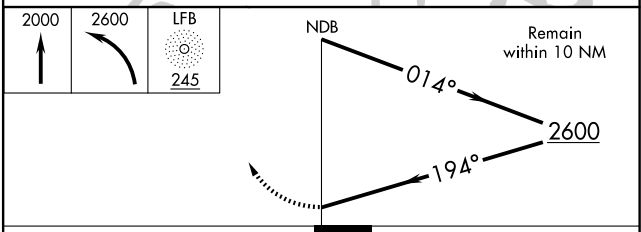
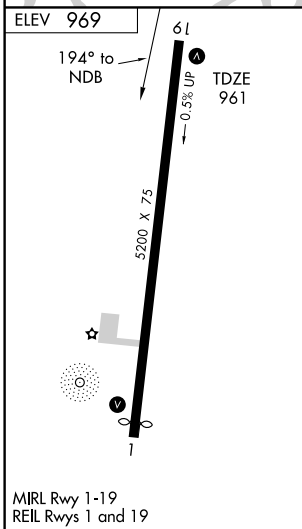
NASHVILLE APP CON
118.4 360.7

UNICOM
122.8 (CTAF)



SE-1, 19 NOV 2009 to 17 DEC 2009

SE-1, 19 NOV 2009 to 17 DEC 2009



CATEGORY	A	B	C	D
S-19	1500-1	539 (600-1)	1500-1½ 539 (600-1½)	1500-1¾ 539 (600-1¾)
CIRCLING	1500-1	531 (600-1)	1500-1½ 531 (600-1½)	1520-2 551 (600-2)
BOWLING GREEN ALTIMETER SETTING MINIMUMS				
S-19	1640-1	679 (700-1)	1640-2 679 (700-2)	1640-2¼ 679 (700-2¼)
CIRCLING	1640-1	671 (700-1)	1640-2 671 (700-2)	1640-2¼ 671 (700-2¼)

LAFAYETTE, TENNESSEE
Amdt 3 09099

36° 31' N-86° 03' W

LAFAYETTE MUNI (3M7)
NDB RWY 19