

LAFAYETTE, TENNESSEE

AL-6653 (FAA)

APP CRS	Rwy Idg	<b>5200</b>
<b>188°</b>	TDZE	<b>961</b>
	Apt Elev	<b>969</b>

# RNAV (GPS) RWY 19

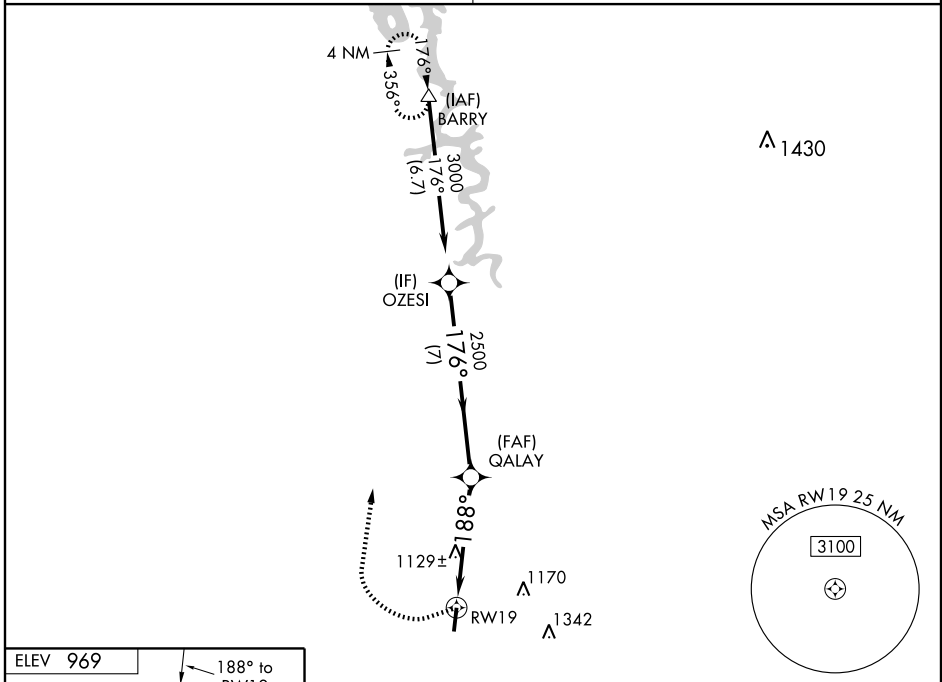
LAFAYETTE MUNI (3M7)

**NA** DME/DME RNP-0.3 NA. Visibility reduction by helicopters NA. Obtain local altimeter setting on CTAF; when not received, use Bowling Green altimeter setting.

MISSED APPROACH: Climbing right turn to 3000 direct BARRY and hold.

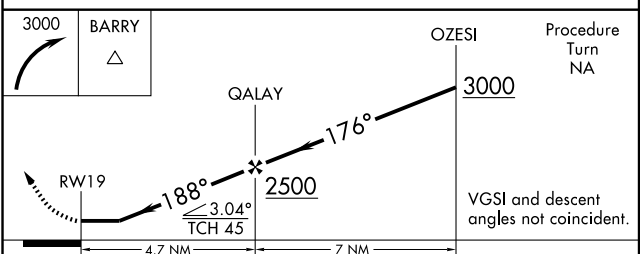
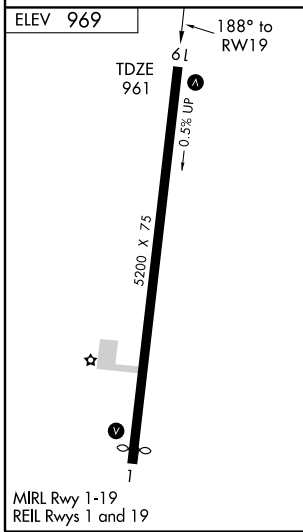
NASHVILLE APP CON **118.4 360.7**

UNICOM **122.8 (CTAF)**



SE-1, 19 NOV 2009 to 17 DEC 2009

SE-1, 19 NOV 2009 to 17 DEC 2009



CATEGORY	A	B	C	D
LNAV MDA	1380-1	419 (500-1)	1380-1¼	419 (500-1¼)
CIRCLING	1440-1	471 (500-1)	1440-1½ 471 (500-1½)	1520-2 551 (600-2)
<b>BOWLING GREEN ALTIMETER SETTING MINIMUMS</b>				
LNAV MDA	1520-1	559 (600-1)	1520-1½ 559 (600-1½)	1520-1¾ 559 (600-1¾)
CIRCLING	1580-1	611 (700-1)	1580-1¾ 611 (700-1¾)	1580-2 611 (700-2)

LAFAYETTE, TENNESSEE  
Orig 09099

36° 31'N-86° 03'W

# RNAV (GPS) RWY 19