

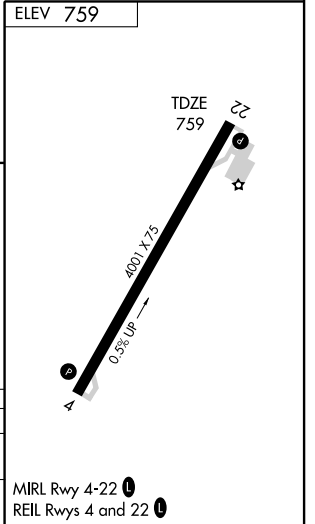
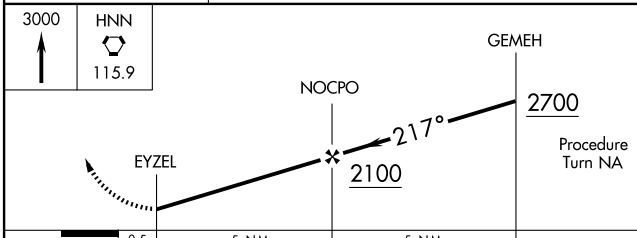
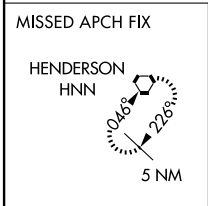
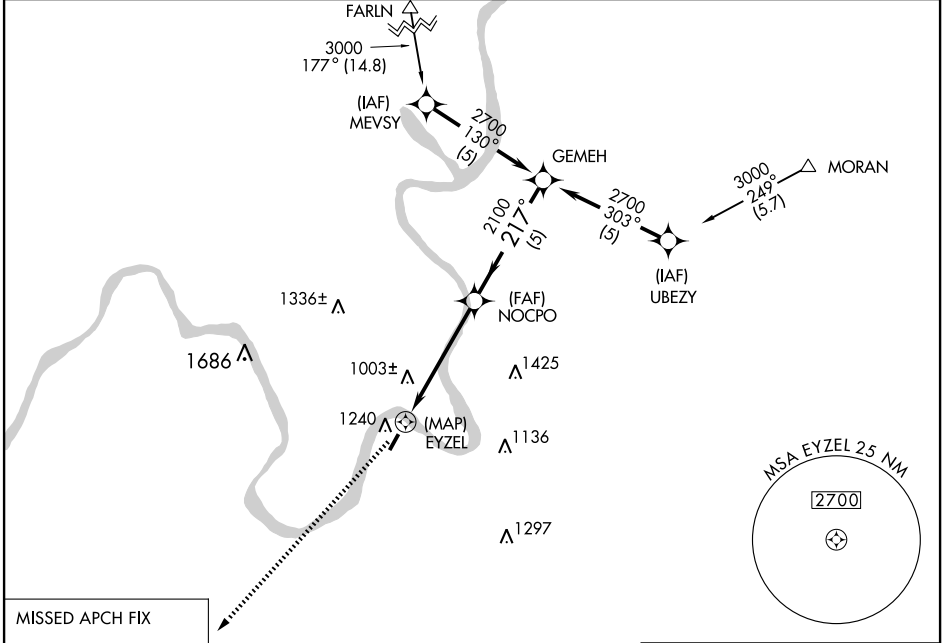
GPS RWY 22

RAVENSWOOD / JACKSON COUNTY (I18)

APP CRS 217°	Rwy Idg 4001
	TDZE 759
	Apt Elev 759

<p>▼</p> <p>▲ NA</p>	<p>MISSED APPROACH: Climb to 3000 direct HNN VORTAC and hold.</p>
----------------------	---

<p>AWOS-2</p> <p>121.3</p>	<p>HUNTINGTON APP CON</p> <p>128.4 270.1</p>	<p>UNICOM</p> <p>122.8 (CTAF) 0</p>
-----------------------------------	---	--



CATEGORY	A	B	C	D
S-22	1440-1 681 (700-1)	681 (700-1)	1440-2 681 (700-2)	NA
CIRCLING	1600-1 841 (900-1)	1600-1¼ 841 (900-1¼)	1600-2½ 841 (900-2½)	NA

NE-4, 11 MAR 2010 to 08 APR 2010

NE-4, 11 MAR 2010 to 08 APR 2010