

VINTON, IOWA

AL-6691 (FAA)

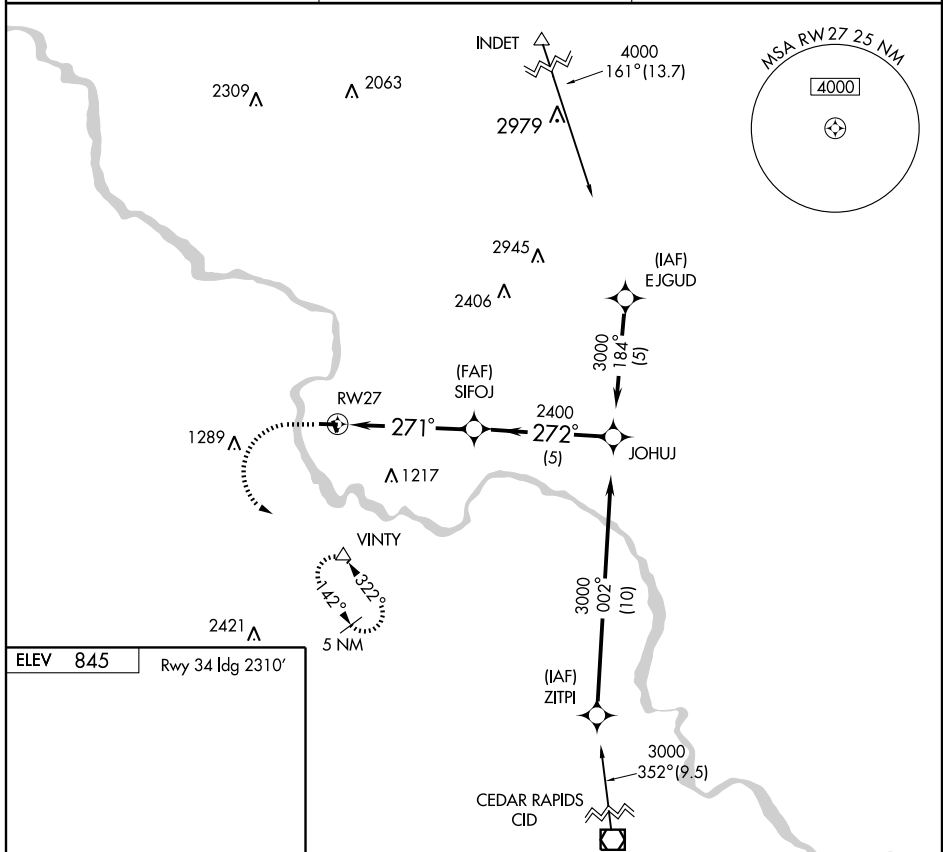
GPS RWY 27

VINTON VETERANS MEMORIAL AIRPARK (VTI)

APP CRS 271°	Rwy Idg 4000
	TDZE 838
	Apt Elev 845

<p>▼ Use Cedar Rapids altimeter setting.</p> <p>▲ NA</p>	<p>MISSED APPROACH: Climb to 3000, then climbing left turn to 3400 direct VINTY WP and hold.</p>
--	--

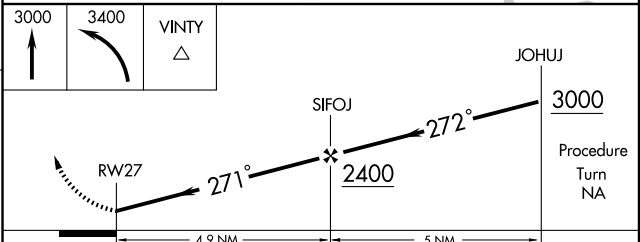
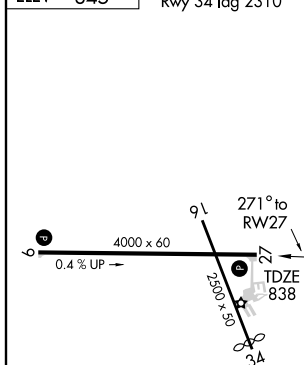
AWOS-3 120.075	CEDAR RAPIDS APP CON ★ 134.05 266.8	UNICOM 122.8 (CTAF)
--------------------------	---	-------------------------------



NC-3, 19 NOV 2009 to 17 DEC 2009

NC-3, 19 NOV 2009 to 17 DEC 2009

ELEV 845	Rwy 34 Idg 2310'
----------	------------------



CATEGORY	A	B	C	D
S-27	1340-1	502 (500-1)		NA
CIRCLING	1380-1	535 (600-1)		NA

VINTON, IOWA
Orig 08101

VINTON VETERANS MEMORIAL AIRPARK (VTI)
42°13'N-92°02'W
GPS RWY 27