

VINTON, IOWA

AL-6691 (FAA)

GPS RWY 9

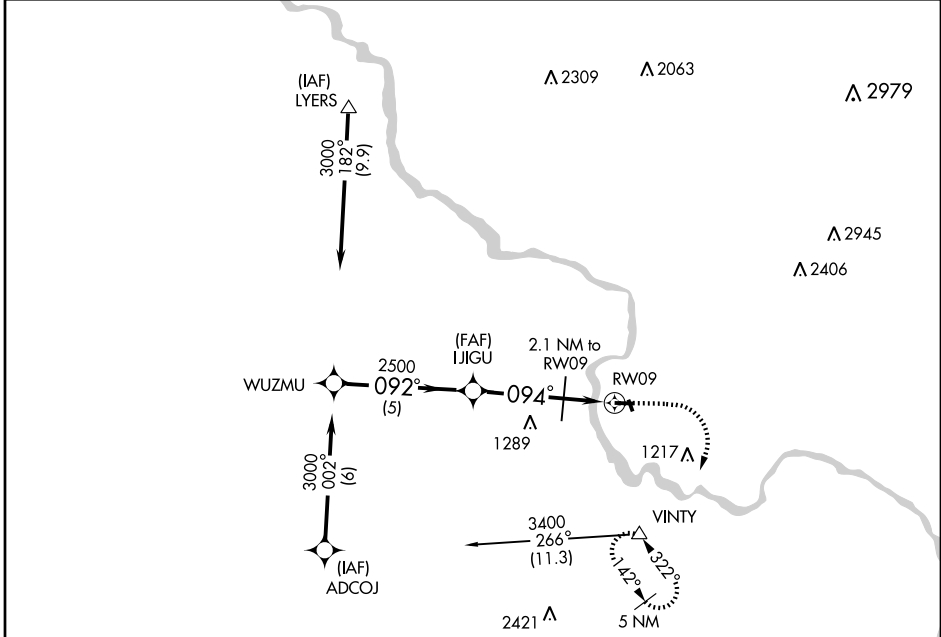
VINTON VETERANS MEMORIAL AIRPARK (VTI)

APP CRS 094°	Rwy ldg 4000
	TDZE 838
	Apt Elev 845

▼ Use Cedar Rapids altimeter setting. **▲ NA**

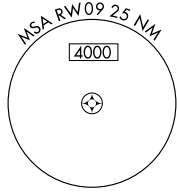
MISSED APPROACH: Climb to 3000, then climbing right turn to 3400 direct VINTY WP and hold.

AWOS-3 120.075	CEDAR RAPIDS APP CON * 134.05 266.8	UNICOM 122.8 (CTAF) 0
--------------------------	---	---------------------------------

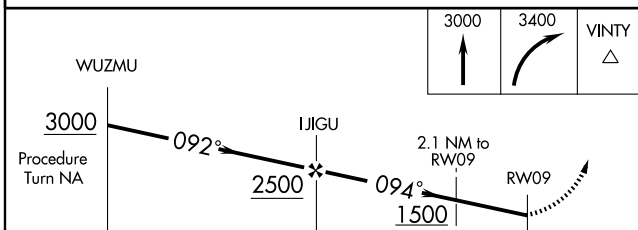


NC-3, 19 NOV 2009 to 17 DEC 2009

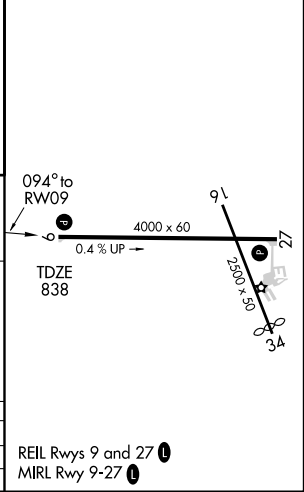
NC-3, 19 NOV 2009 to 17 DEC 2009



ELEV 845	Rwy 34 ldg 2310'
----------	------------------



	5 NM		3 NM		2.1 NM	
CATEGORY	A	B	C	D		
S-9	1300-1	462 (500-1)	NA			
CIRCLING	1380-1	535 (600-1)	NA			



VINTON, IOWA
Orig 09015

VINTON VETERANS MEMORIAL AIRPARK (VTI)
42°13'N-92°02'W
GPS RWY 9

REIL Rwy 9 and 27 0
MIRL Rwy 9-27 0