

MONTAUK, NEW YORK

AL-6710 (FAA)

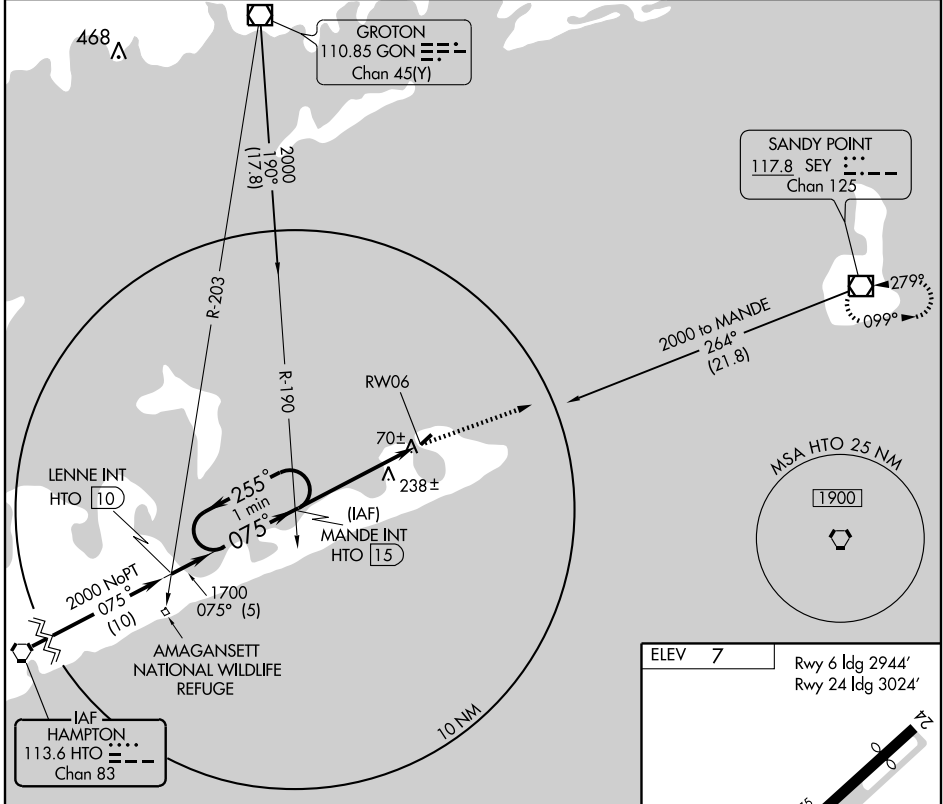
# VOR or GPS RWY 6 MONTAUK (MTP)

HTO VORTAC <b>113.6</b> Chan <b>83</b>	APP CRS <b>075°</b>	Rwy ldg <b>2944</b> TDZE <b>6</b> Apt Elev <b>7</b>
--	------------------------	---

Use Block Island State altimeter setting.  
 Procedure NA at night.

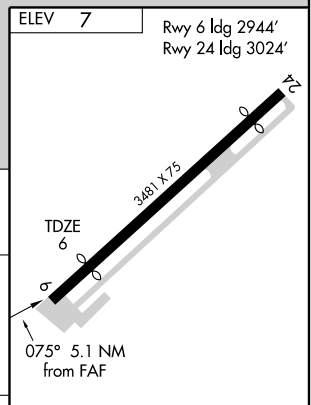
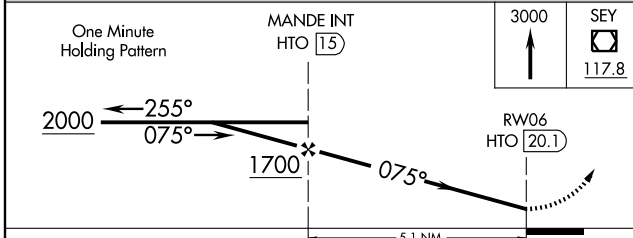
MISSED APPROACH: Climb to 3000 direct SEY VOR/DME and hold.

NEW YORK APP CON * <b>125.975 343.65</b>	UNICOM <b>122.7</b> (CTAF)	<b>121.7</b>
---	-------------------------------	--------------



NE-2, 11 MAR 2010 to 08 APR 2010

NE-2, 11 MAR 2010 to 08 APR 2010



CATEGORY	A	B	C	D
S-6	660-1 654 (700-1)	660-1¼ 654 (700-1¼)		NA
CIRCLING	660-1 653 (700-1)	660-1¼ 653 (700-1¼)		NA

FAF to MAP 5.1 NM					
Knots	60	90	120	150	180
Min:Sec	5:06	3:24	2:33	2:02	1:42

MONTAUK, NEW YORK  
Amdt 3 08269

41°05'N - 71°55'W

# VOR or GPS RWY 6 MONTAUK (MTP)