

# ILS or LOC RWY 18

JEFFERSONVILLE / CLARK RGNL (JVY)

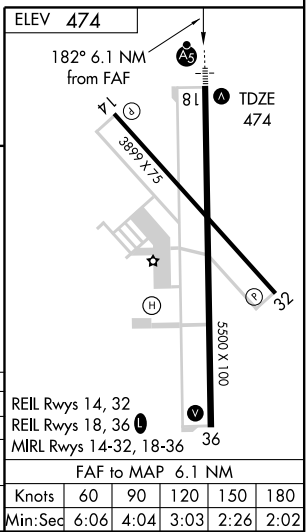
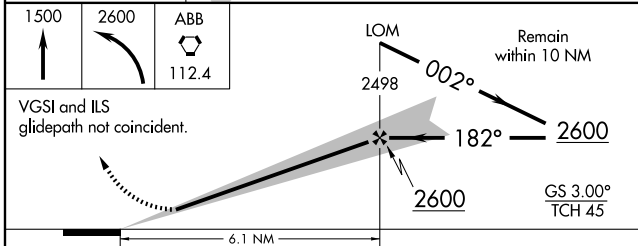
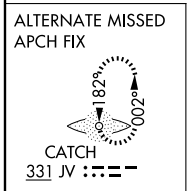
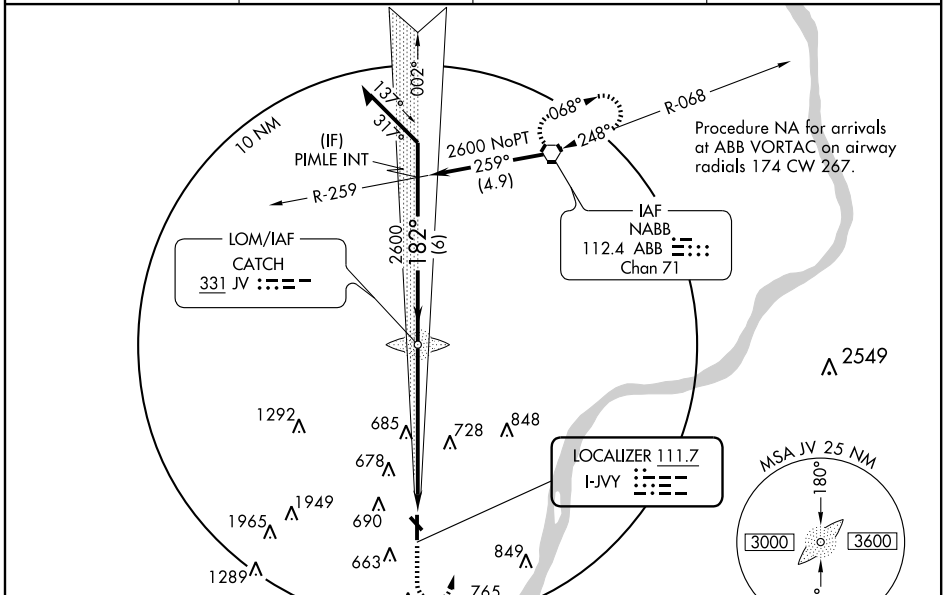
LOC I-JVY <b>111.7</b>	APP CRS <b>182°</b>	Rwy Idg <b>5500</b>
		TDZE <b>474</b>
		Apt Elev <b>474</b>

**⚠** Autopilot coupled approach NA below 988. When local altimeter setting not received, use Louisville Intl-Standford Field altimeter setting and increase all DA 31 feet and all MDA 40 feet.

**MALSR**  
AS

**MISSED APPROACH:** Climb to 1500 then climbing left turn to 2600 direct ABB VORTAC and hold.

AWOS-3 <b>118.575</b>	LOUISVILLE APP CON <b>132.075 327.0</b>	CLNC DEL <b>118.05</b>	UNICOM <b>122.7 (CTAF)</b>
--------------------------	--	---------------------------	-------------------------------



CATEGORY	A	B	C	D
S-ILS 18		674-1/2 200 (200-1/2)		
S-LOC 18	1020-1/2 546 (600-1/2)		1020-1 546 (600-1)	1020-1 1/4 546 (600-1 1/4)
CIRCLING	1020-1 546 (600-1)		1020-1 1/2 546 (600-1 1/2)	1100-2 626 (700-2)

EC-2, 19 NOV 2009 to 17 DEC 2009

EC-2, 19 NOV 2009 to 17 DEC 2009