

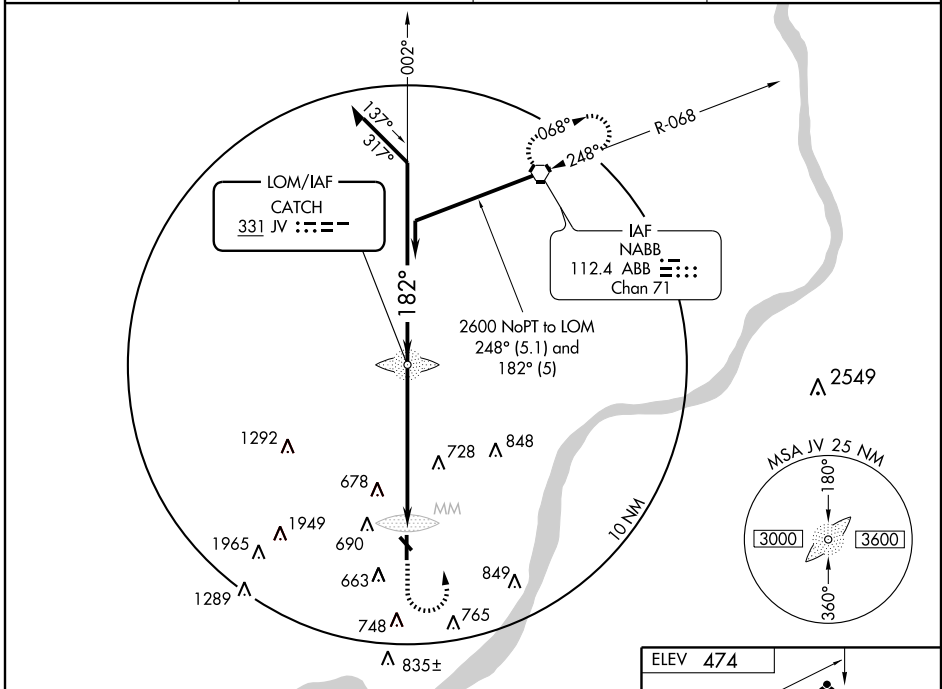
# NDB RWY 18

JEFFERSONVILLE / CLARK RGNL (JVY)

LOM JV <b>331</b>	APP CRS <b>182°</b>	Rwy Idg <b>5500</b>
		TDZE <b>474</b>
		Apt Elev <b>474</b>

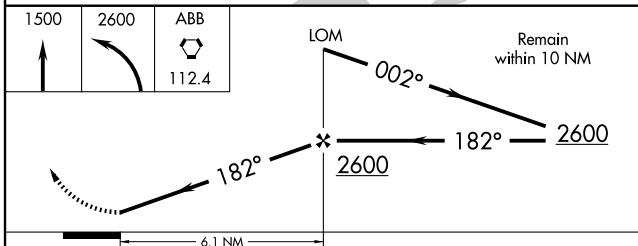
	Obtain local altimeter on CTAF, when not received, use Louisville/Standford altimeter setting.		MISSED APPROACH: Climb to 1500 then climbing left turn to 2600 direct ABB VORTAC and hold.

AWOS-3 <b>118.575</b>	LOUISVILLE APP CON <b>132.075 327.0</b>	CLNC DEL <b>118.05</b>	UNICOM <b>122.7 (CTAF) 0</b>
--------------------------	--	---------------------------	---------------------------------



EC-2, 19 NOV 2009 to 17 DEC 2009

EC-2, 19 NOV 2009 to 17 DEC 2009



ELEV 474	
182° 6.1 NM from FAF	
	TDZE 474
	3899 X 75
	5500 X 100
	36

REIL Rwy 14, 32  
REIL Rwy 18, 36  
MIRL Rwy 14-32, 18-36

FAF to MAP 6.1 NM					
Knots	60	90	120	150	180
Min:Sec	6:06	4:04	3:03	2:26	2:02

CATEGORY	A	B	C	D
S-18	1080-¾	606 (700-¾)	1080-1¼ 606 (700-1¼)	1080-1¾ 606 (700-1¾)
CIRCLING	1080-1	606 (700-1)	1080-1¾ 606 (700-1¾)	1100-2 626 (700-2)
LOUISVILLE/STANDFORD ALTIMETER SETTING MINIMUMS				
S-18	1100-¾	626 (700-¾)	1100-1¼ 626 (700-1¼)	1100-1¾ 626 (700-1¾)
CIRCLING	1100-1	626 (700-1)	1100-1¾ 626 (700-1¾)	1140-2 666 (700-2)