

NDB or GPS RWY 1

LITTLEFIELD MUNI (LIU)

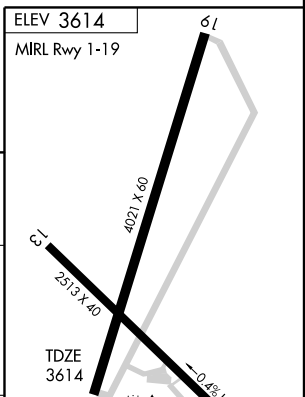
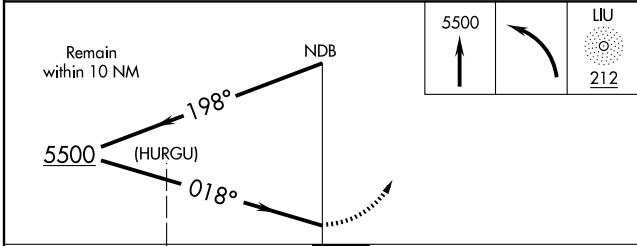
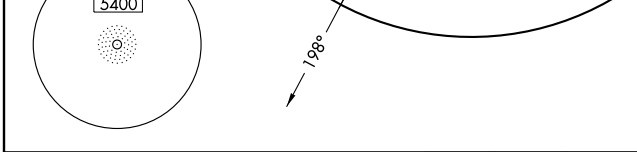
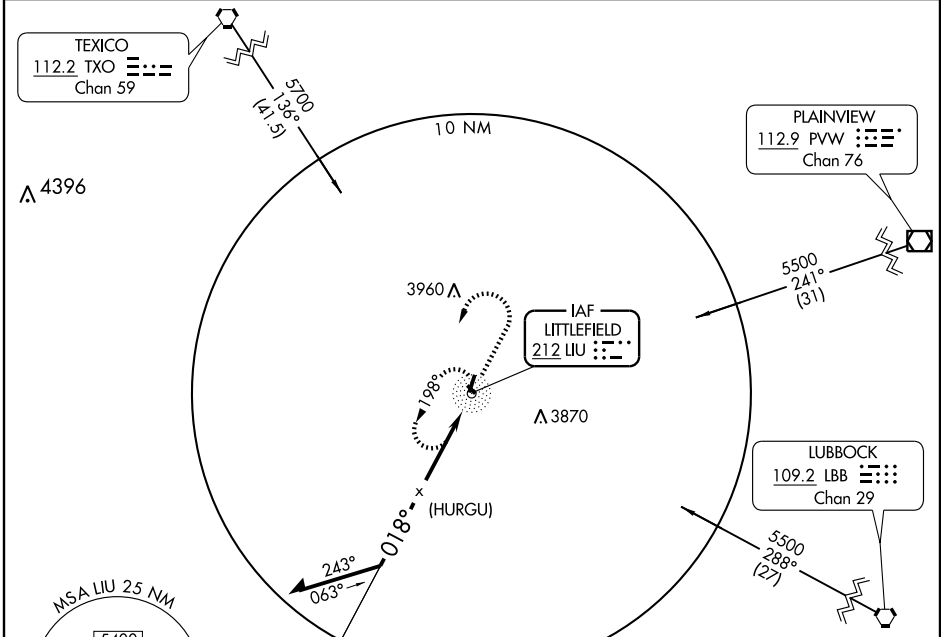
NDB LIU 212	APP CRS 018°	Rwy Idg 4021
		TDZE 3614
		Apt Elev 3614

NA Use Lubbock altimeter setting.

MISSED APPROACH: Climb to 5500, then left turn direct LIU NDB and hold.

LUBBOCK APP CON
119.9 335.6

UNICOM
122.8 (CTAF)



CATEGORY	A	B	C	D
S-1	4160-1	546 (600-1)	4160-1½ 546 (600-1½)	NA
CIRCLING	4160-1	546 (600-1)	4160-1½ 546 (600-1½)	NA

ELEV 3614	MIRL Rwy 1-19	61			
TDZE 3614	018° to LIU NDB	3666 ±			
Knots	60	90	120	150	180
Min:Sec					

SC-2, 11 MAR 2010 to 08 APR 2010

SC-2, 11 MAR 2010 to 08 APR 2010