

LOC RWY 4

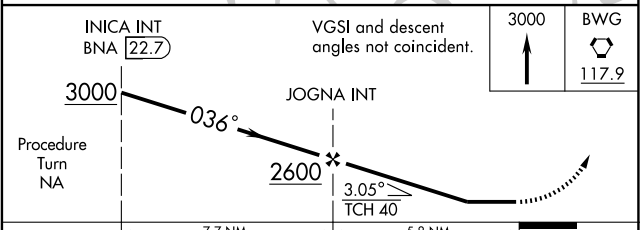
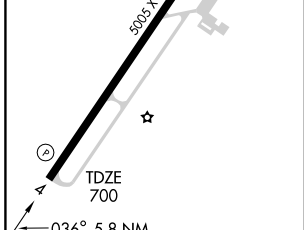
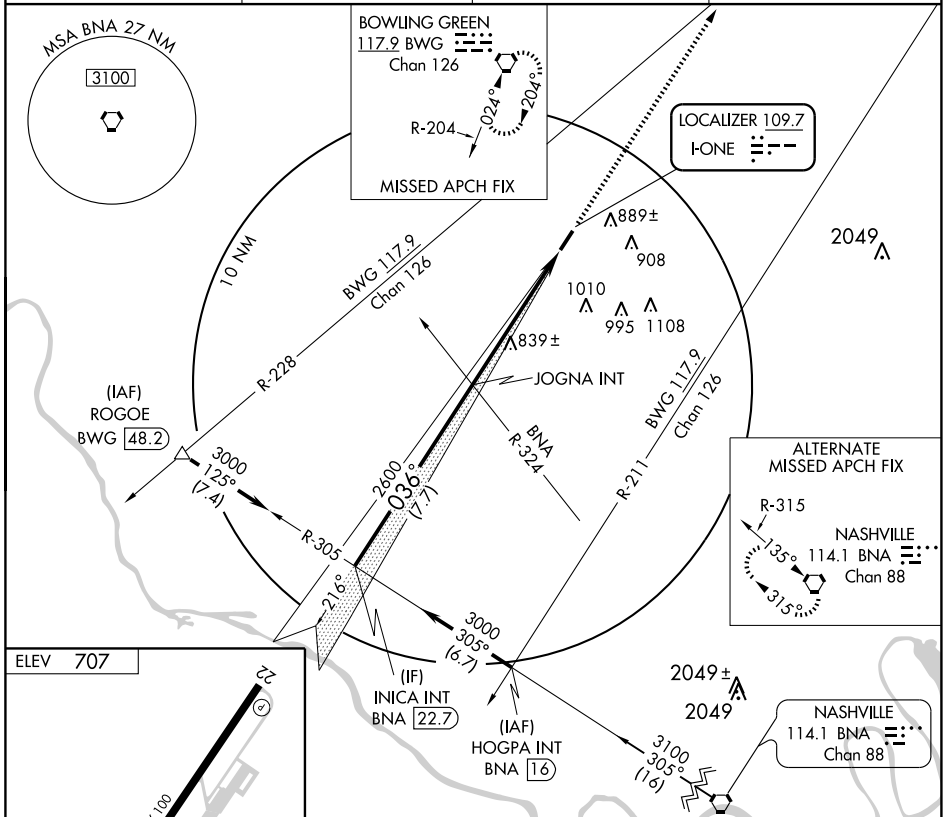
SPRINGFIELD ROBERTSON COUNTY (M91)

LOC I-ONE 109.7	APP CRS 036°	Rwy Idg 5005 TDZE 700 Apt Elev 707
---------------------------	------------------------	---

NA When local altimeter setting not received, use Nashville Intl altimeter setting and increase all MDA 80 feet and increase S-4 and Circling Cats. C and D visibility ¼ mile. Visibility reduction by helicopters NA.

MISSED APPROACH: Climb to 3000 direct BWG VORTAC and hold.

AWOS-3 120.675	NASHVILLE APP CON 119.35 385.55	GCO 121.725	UNICOM 123.0 (CTAF) 0
--------------------------	---	-----------------------	---------------------------------



CATEGORY	A	B	C	D
S-4	1100-1	400 (400-1)		1100-1½ 400 (400-1½)
CIRCLING	1140-1 433 (500-1)	1240-1 533 (600-1)	1240-1½ 533 (600-1½)	1300-2 593 (600-2)

LOC RWY 4

SE-1, 19 NOV 2009 to 17 DEC 2009

SE-1, 19 NOV 2009 to 17 DEC 2009