

# RNAV (GPS) RWY 22

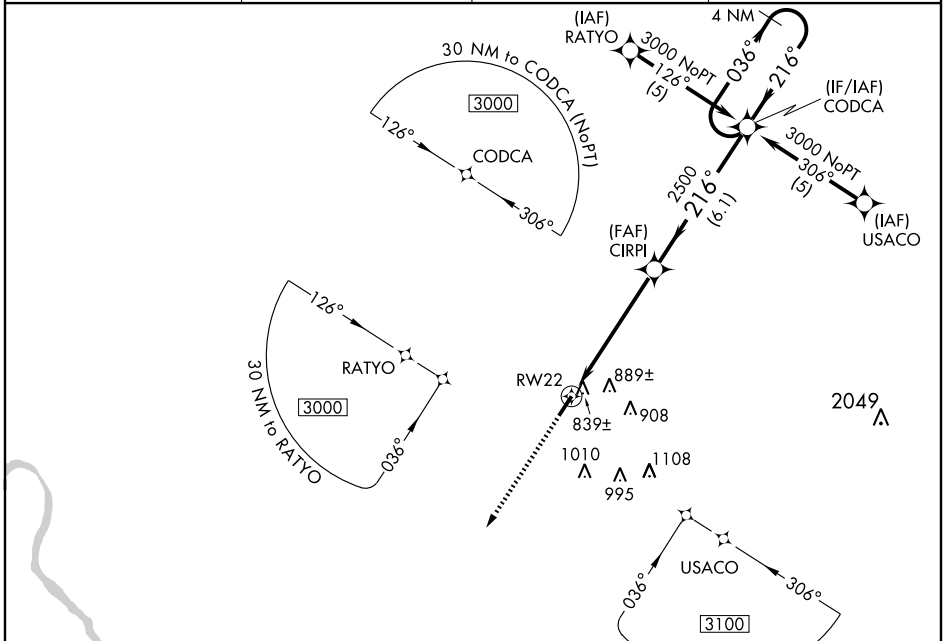
SPRINGFIELD ROBERTSON COUNTY (M91)

APP CRS <b>216°</b>	Rwy Idg <b>5005</b>
	TDZE <b>707</b>
	Apt Elev <b>707</b>

**NA** DME/DME RNP-0.3 NA. If local altimeter setting not received, use Nashville Intl altimeter setting and increase all MDAs 80 feet. VDP NA when using Nashville Intl altimeter setting.

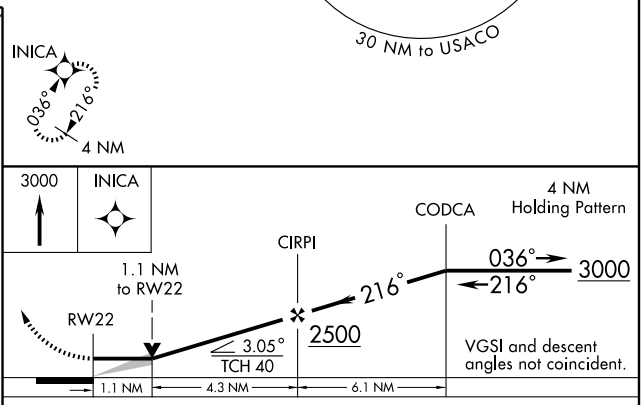
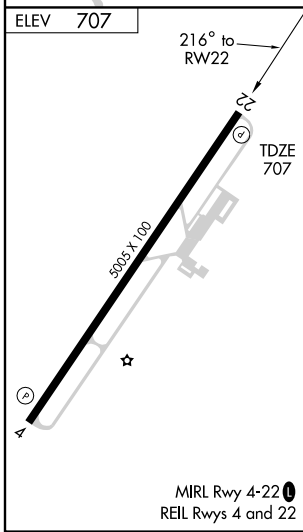
MISSED APPROACH: Climb to 3000 direct INICA and hold.

AWOS-3 <b>120.675</b>	NASHVILLE APP CON <b>119.35 385.55</b>	GCO <b>121.725</b>	UNICOM <b>123.0</b> (CTAF) <b>0</b>
--------------------------	---	-----------------------	--



SE-1, 19 NOV 2009 to 17 DEC 2009

SE-1, 19 NOV 2009 to 17 DEC 2009



CATEGORY	A	B	C	D
LNAV MDA	1100-1 393 (400-1)			1100-1½ 393 (400-1½)
CIRCLING	1140-1 433 (500-1)	1240-1 533 (600-1)	1240-1½ 533 (600-1½)	1300-2 593 (600-2)