

RNAV (GPS) RWY 4

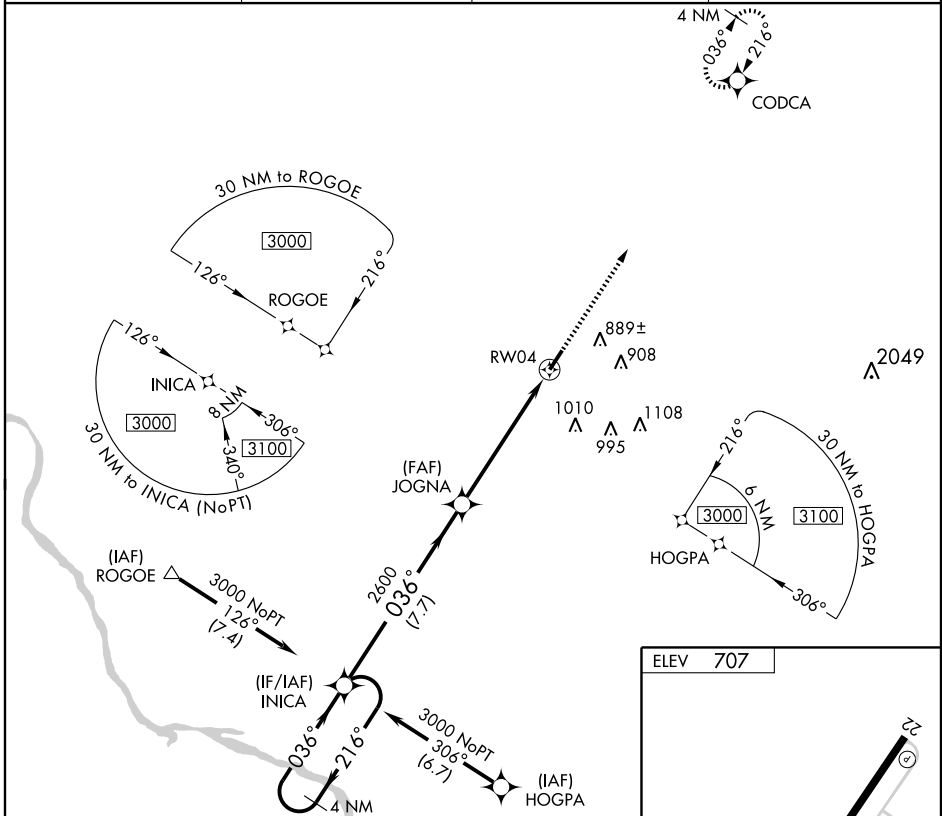
SPRINGFIELD ROBERTSON COUNTY (M91)

APP CRS 036°	Rwy Idg 5005 TDZE 700 Apt Elev 707
------------------------	---

▼ If local altimeter setting not received, use Nashville Intl altimeter setting and increase all MDAs 80 feet. VDP NA when using Nashville Intl altimeter setting.
▲ NA DME/DME RNP-0.3 NA.

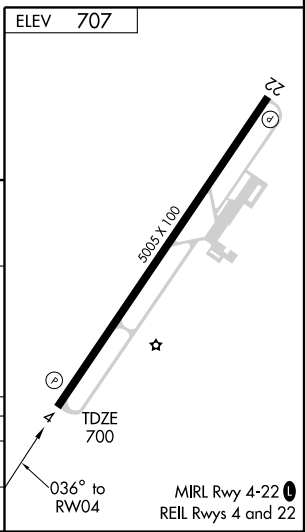
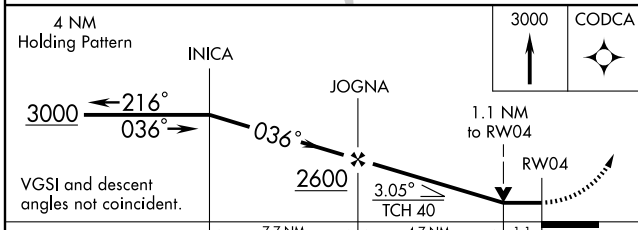
MISSED APPROACH: Climb to 3000 direct CODCA and hold.

AWOS-3 120.675	NASHVILLE APP CON 119.35 385.55	GCO 121.725	UNICOM 123.0 (CTAF) ①
--------------------------	---	-----------------------	---------------------------------



SE-1, 19 NOV 2009 to 17 DEC 2009

SE-1, 19 NOV 2009 to 17 DEC 2009



CATEGORY	A	B	C	D
LNVA MDA	1100-1 400 (400-1)			1100-1¼ 400 (400-1¼)
CIRCLING	1140-1 433 (500-1)	1240-1 533 (600-1)	1240-1½ 533 (600-1½)	1300-2 593 (600-2)