

LOC/DME-A

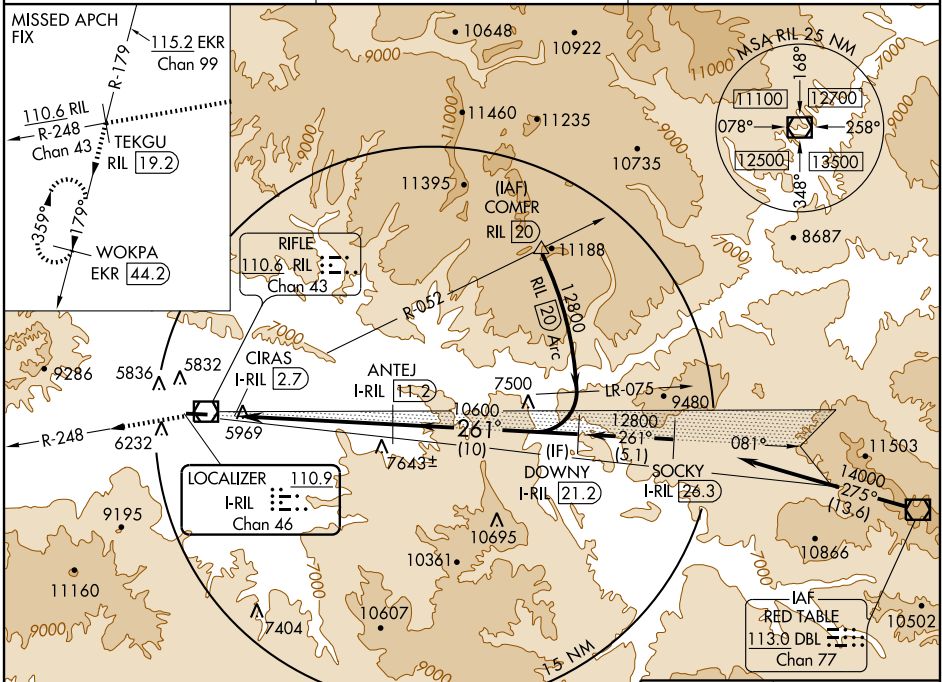
RIFLE/GARFIELD COUNTY RGNL (RIL)

LOC/DME I-RIL 110.9 Chan 46	APP CRS 261°	Rwy Idg TDZE Apt Elev 5548	N/A N/A
--	------------------------	--	--------------------------

⚠ Circling not authorized at night south of Rwy 8-26.
⚠ Use I-RIL DME when on localizer course.

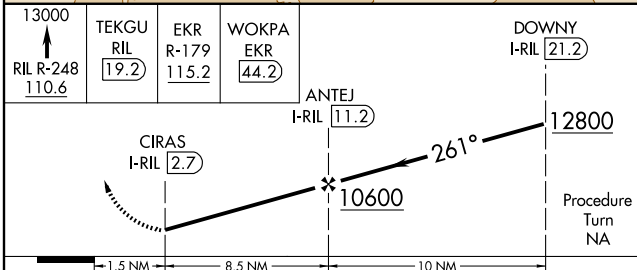
MISSED APPROACH: Climb to 13000 via RIL VOR/DME
 R-248 to TEKGU/RIL 19.2 DME and via EKR VOR/DME
 R-179 to WOKPA/EKR 44.2 DME and hold.

ASOS 135.275	DENVER CENTER 134.5 327.8	UNICOM 122.8 (CTAF)
------------------------	-------------------------------------	-------------------------------



SW-1, 11 MAR 2010 to 08 APR 2010

SW-1, 11 MAR 2010 to 08 APR 2010



CATEGORY	A	B	C	D
CIRCLING	7860-1 $\frac{3}{4}$	2312 (2400-1 $\frac{3}{4}$)	7860-3 2312 (2400-3)	NA

