

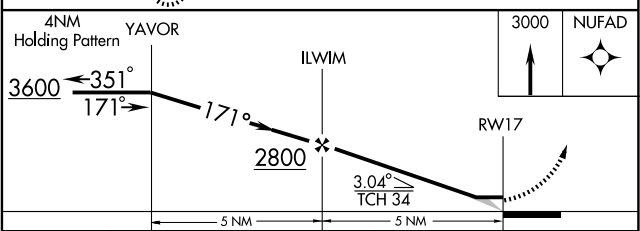
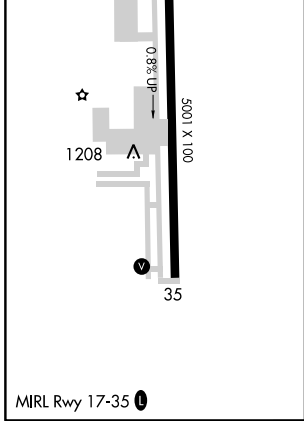
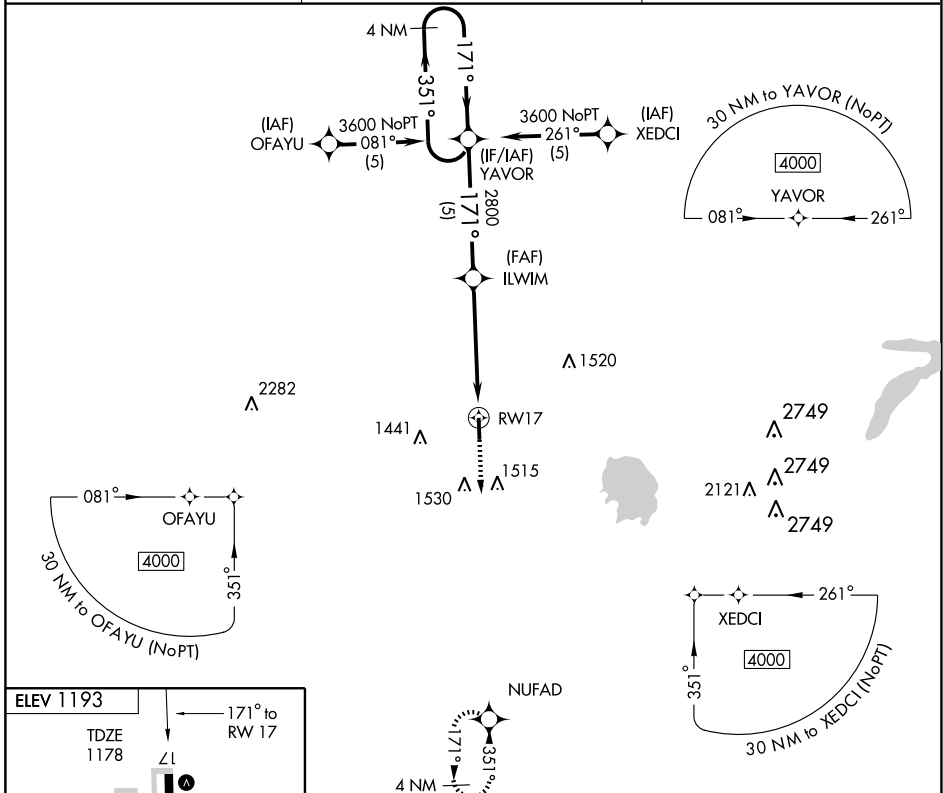
RNAV (GPS) RWY 17

OKLAHOMA CITY/SUNDANCE AIRPARK (HSD)

APP CRS 171°	Rwy Idg 5001
	TDZE 1178
	Apt Elev 1193

NA Use Wiley Post altimeter setting. GPS or RNP-0.3 REQUIRED. DME/DME RNP-0.3 NA. MISSED APPROACH: Climb to 3000 direct NUFAD and hold.

OKE CITY APP CON 124.6 266.8	CLNC DEL 123.7	UNICOM 122.7 (CTAF)
--	--------------------------	-------------------------------



CATEGORY	A	B	C	D
GLS DA				NA
LNAV/VNAV DA				NA
LNAV MDA	1600-1	422 (500-1)	1600-1½ 422 (500-1½)	NA
CIRCLING	1740-1 547 (600-1)	1780-1 587 (600-1)	1780-1½ 587 (600-1½)	NA

SC-1, 11 MAR 2010 to 08 APR 2010

SC-1, 11 MAR 2010 to 08 APR 2010