

# RNAV (GPS) RWY 35

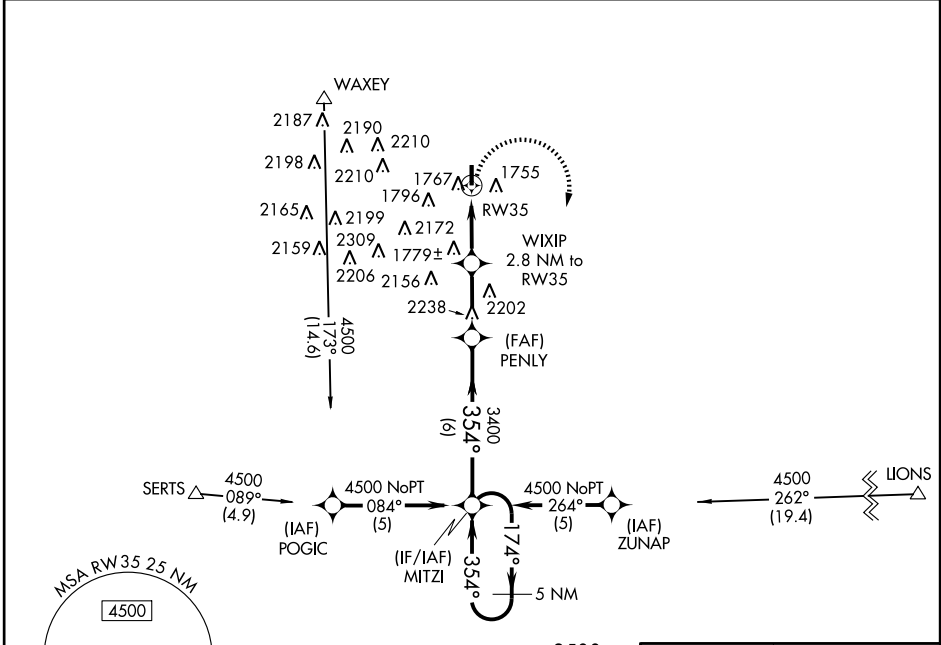
WEATHERFORD/THOMAS P. STAFFORD (OJA)

APP CRS <b>354°</b>	Rwy Idg <b>4400</b>
	TDZE <b>1605</b>
	Apt Elev <b>1605</b>

**▽** If local altimeter setting not received, use Clinton Rgnl altimeter setting and increase all MDAs 40 feet. DME/DME RNP-0.3 NA. Visibility reduction by helicopters NA. VDP NA when using Clinton Rgnl altimeter setting.

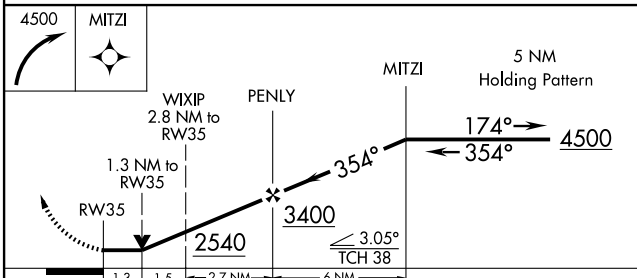
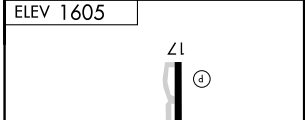
**MISSED APPROACH:** Climbing right turn to 4500 direct MITZI and hold.

AWOS-3 <b>118.575</b>	FORT WORTH CENTER <b>128.4 269.375</b>	UNICOM <b>122.8</b> (CTAF)	GCO <b>135.075</b>
--------------------------	---	-------------------------------	-----------------------

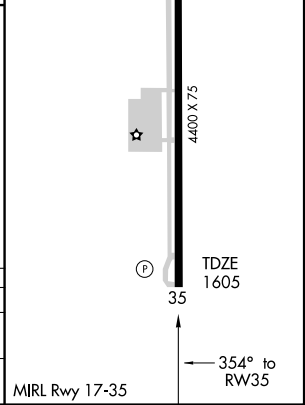


SC-1, 19 NOV 2009 to 17 DEC 2009

SC-1, 19 NOV 2009 to 17 DEC 2009



CATEGORY	A	B	C	D
RNAV MDA	2040-1	435 (500-1)	2040-1¼ 435 (500-1¼)	NA
CIRCLING	2080-1 475 (500-1)	2120-1 515 (600-1)	2140-1½ 535 (600-1½)	NA



# RNAV (GPS) RWY 35