

# RNAV (GPS) RWY 17

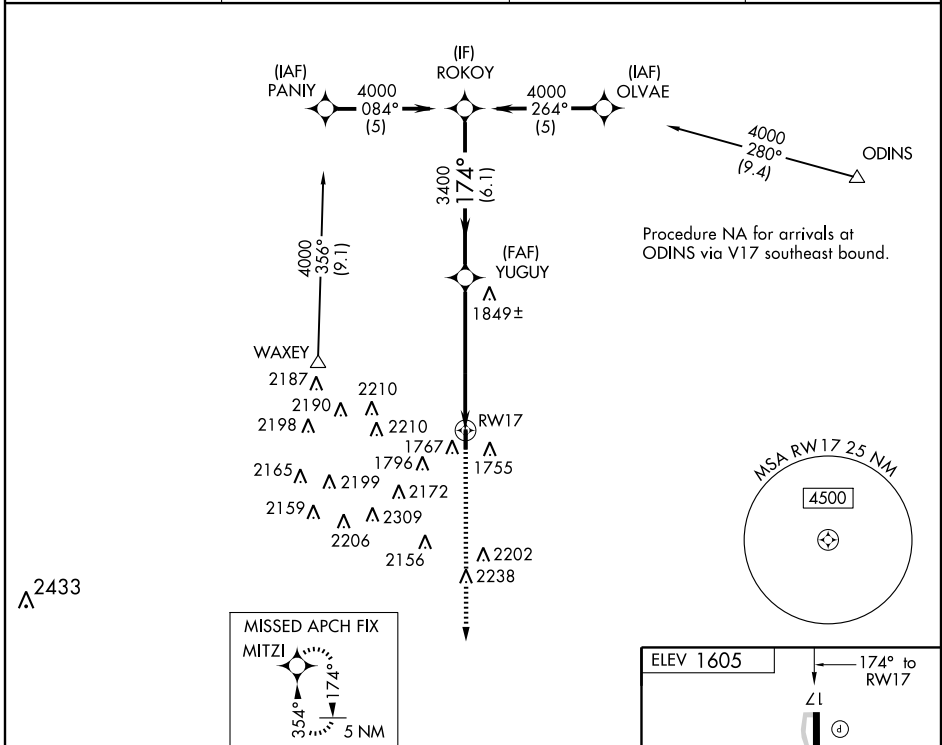
WEATHERFORD/THOMAS P. STAFFORD (OJA)

APP CRS <b>174°</b>	Rwy Idg <b>4400</b> TDZE <b>1605</b> Apt Elev <b>1605</b>
------------------------	---

**⚠** If local altimeter setting not received, use Clinton Rgnl altimeter setting and increase all MDAs 40 feet. DME/DME RNP-0.3 NA.  
**⚠ NA** Visibility reduction by helicopters NA.

**MISSED APPROACH:** Climb to 4500 direct MITZI and hold.

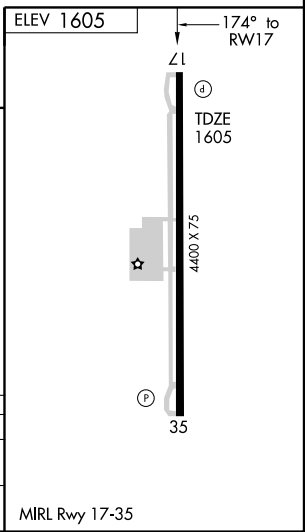
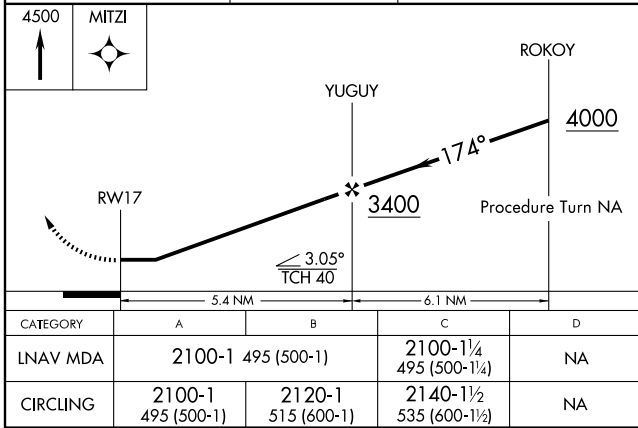
AWOS-3 <b>118.575</b>	FORT WORTH CENTER <b>128.4 269.375</b>	UNICOM <b>122.8</b> (CTAF)	GCO <b>135.075</b>
--------------------------	---	-------------------------------	-----------------------



Procedure NA for arrivals at ODINS via V17 southeast bound.

SC-1, 19 NOV 2009 to 17 DEC 2009

SC-1, 19 NOV 2009 to 17 DEC 2009



CATEGORY	A	B	C	D
LNVA MDA	2100-1 495 (500-1)	2120-1 515 (600-1)	2100-1½ 495 (500-1½)	NA
CIRCLING	2100-1 495 (500-1)	2120-1 515 (600-1)	2140-1½ 535 (600-1½)	NA

MIRL Rwy 17-35

# RNAV (GPS) RWY 17