

# VOR RWY 22

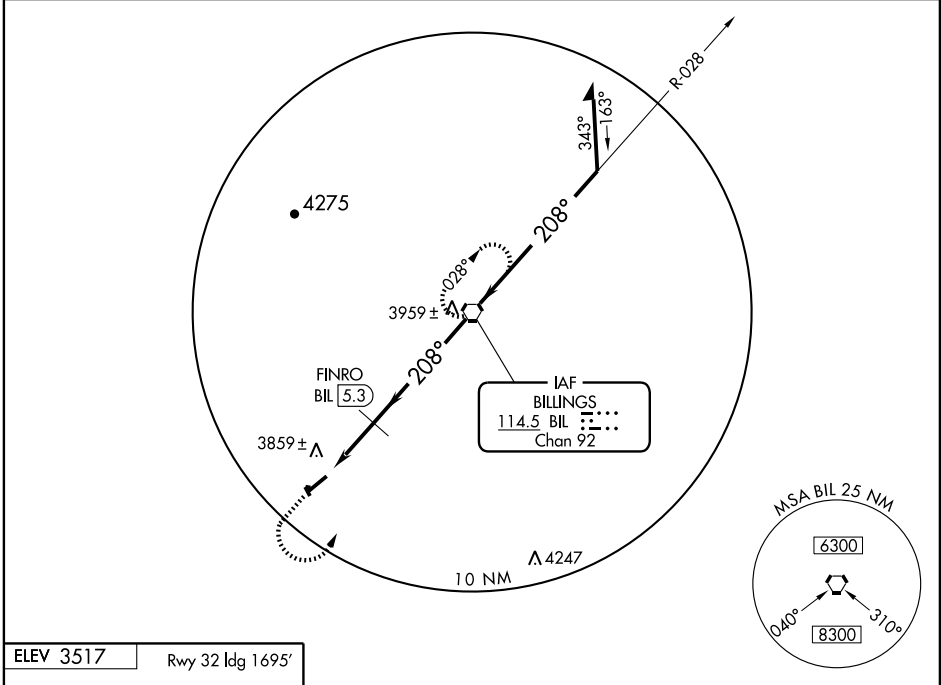
LAUREL MUNI (6S8)

VORTAC BIL	APP CRS	Rwy Idg	5200
114.5	208°	TDZE	3472
Chan 92		Apt Elev	3517

▼ Use Billings altimeter setting.  
 ▲ NA

MISSED APPROACH: Climb to 4700 then climbing left turn to 6300 direct BIL VORTAC and hold.

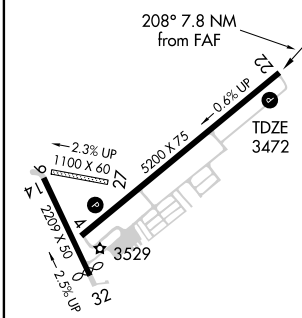
AWOS-3 123.05	BILLINGS APP CON 119.2 120.5 284.6	UNICOM 123.05 (CTAF)
------------------	---------------------------------------	-------------------------



NW-1, 11 MAR 2010 to 08 APR 2010

NW-1, 11 MAR 2010 to 08 APR 2010

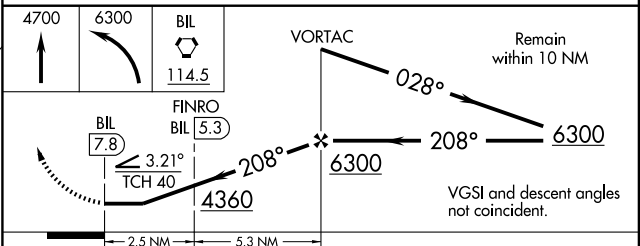
ELEV 3517	Rwy 32 Idg 1695'
-----------	------------------



MIRL Rwy 4-22

FAF to MAP 7.8 NM

Knots	60	90	120	150	180
Min:Sec	7:48	5:12	3:54	3:07	2:36



CATEGORY	A	B	C	D
S-22	4360-1¼ 888 (900-1¼)		4360-2¾ 888 (900-2¾)	4360-3 888 (900-3)
CIRCLING	4360-1¼ 843 (900-1¼)		4360-2¾ 843 (900-2¾)	4360-3 843 (900-3)
FINRO FIX MINIMUMS				
S-22	4160-1 688 (700-1)		4160-2 688 (700-2)	4160-2½ 688 (700-2½)
CIRCLING	4220-1 703 (800-1)		4220-2 703 (800-2)	4340-2¾ 823 (900-2¾)