

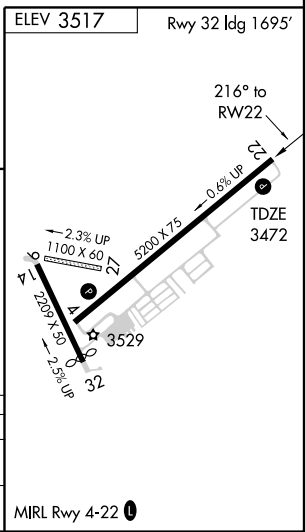
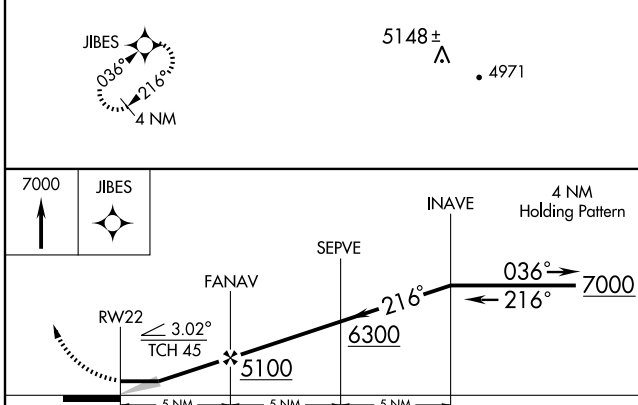
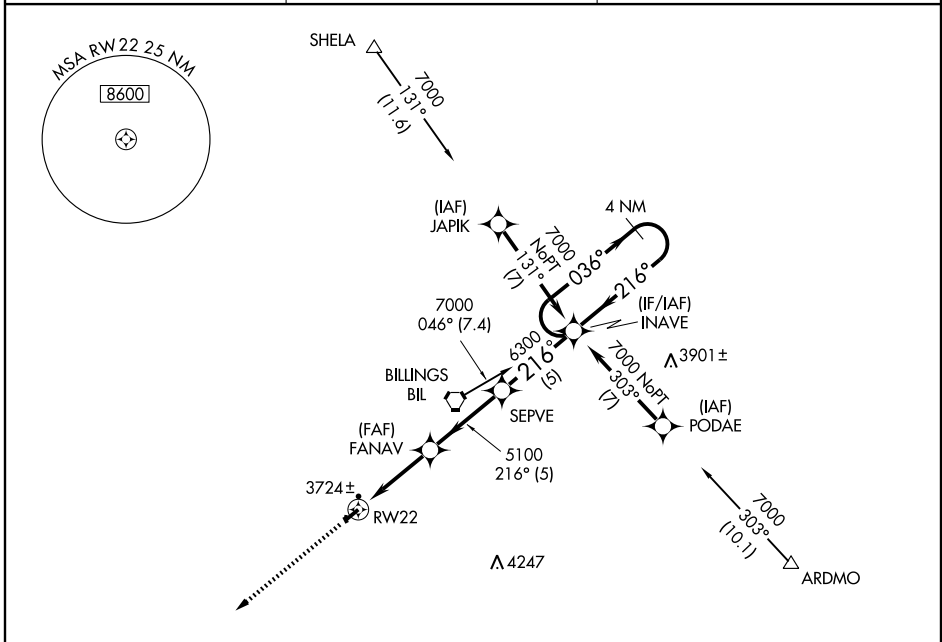
RNAV (GPS) RWY 22

LAUREL MUNI (6S8)

APP CRS 216°	Rwy Idg 5200
	TDZE 3472
	Apt Elev 3517

▽ GPS or RNP-0.3 required. DME/DME RNP-0.3 NA.
▲ NA Use Billings altimeter setting.
 MISSED APPROACH: Climb to 7000 direct JIBES WP and hold.

AWOS-3 123.05	BILLINGS APP CON 119.2 120.5 284.6	UNICOM 123.05 (CTAF) 0
-------------------------	--	----------------------------------



CATEGORY	A	B	C	D
RNAV MDA	4100-1	628 (600-1)	4100-1¾ 628 (600-1¾)	4100-2 628 (600-2)
CIRCLING	4220-1	703 (800-1)	4220-2 703 (800-2)	4340-2¾ 823 (900-2¾)

NW-1, 19 NOV 2009 to 17 DEC 2009

NW-1, 19 NOV 2009 to 17 DEC 2009