

SOUTH HILL, VIRGINIA

AL-6793 (FAA)

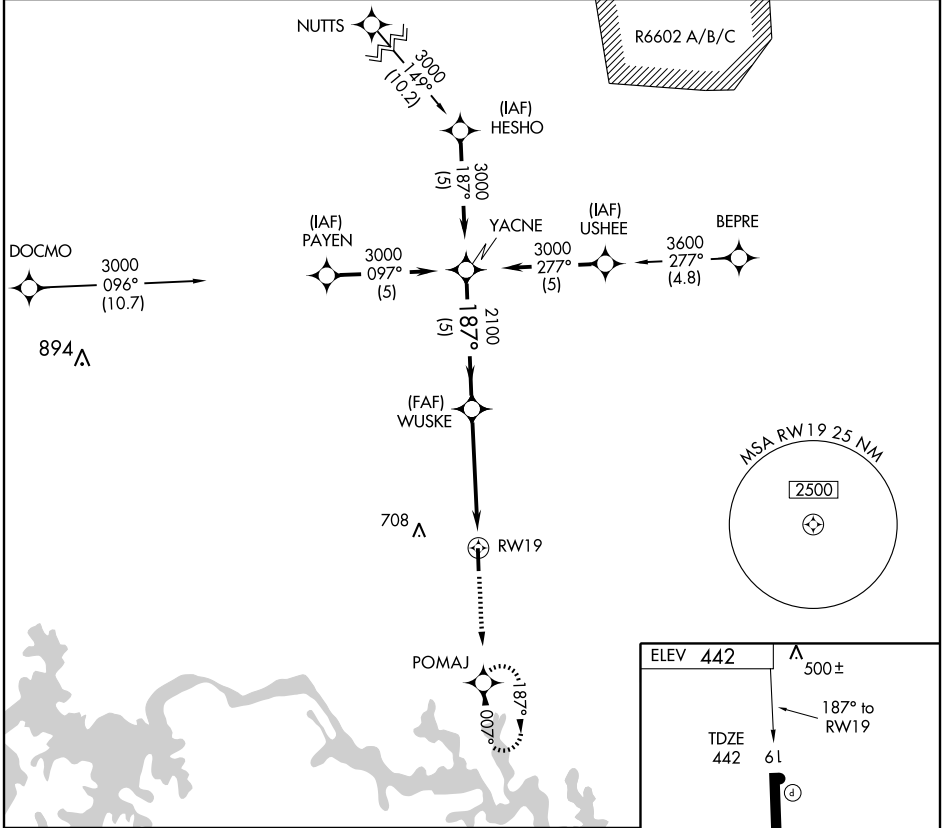
GPS RWY 19

SOUTH HILL / MECKLENBURG-BRUNSWICK RGNL (A/C)

APP CRS	Rwy Idg	5002
187°	TDZE	442
	Apt Elev	442

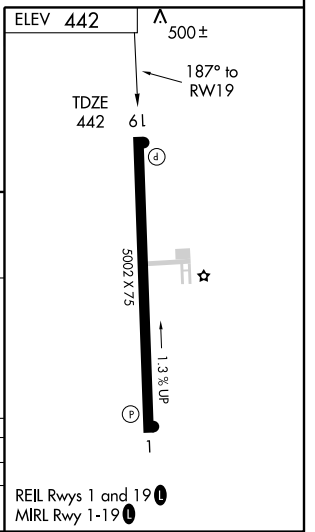
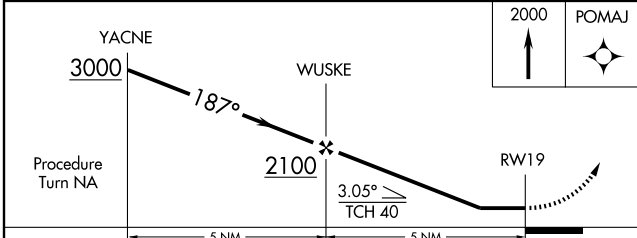
<p>▼</p> <p>▲ NA</p>	MISSED APPROACH: Climb to 2000 direct POMAJ WP and hold.
----------------------	--

AWOS-3 127.525	WASHINGTON CENTER 118.75 377.1	UNICOM 122.8 (CTAF) 0
--------------------------	--	--



NE-3, 19 NOV 2009 to 17 DEC 2009

NE-3, 19 NOV 2009 to 17 DEC 2009



CATEGORY	A	B	C	D
S-19		760-1	318 (400-1)	
CIRCLING	800-1 358 (400-1)	900-1 458 (500-1)	900-1½ 458 (500-1½)	1060-2 618 (700-2)

REIL Rwy 1 and 19 **0**
MIRL Rwy 1-19 **0**

SOUTH HILL, VIRGINIA
Orig 07242

SOUTH HILL / MECKLENBURG-BRUNSWICK RGNL (A/C)
36°41'N - 78°03'W

GPS RWY 19