

SOUTH HILL, VIRGINIA

AL-6793 (FAA)

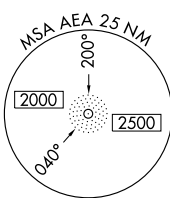
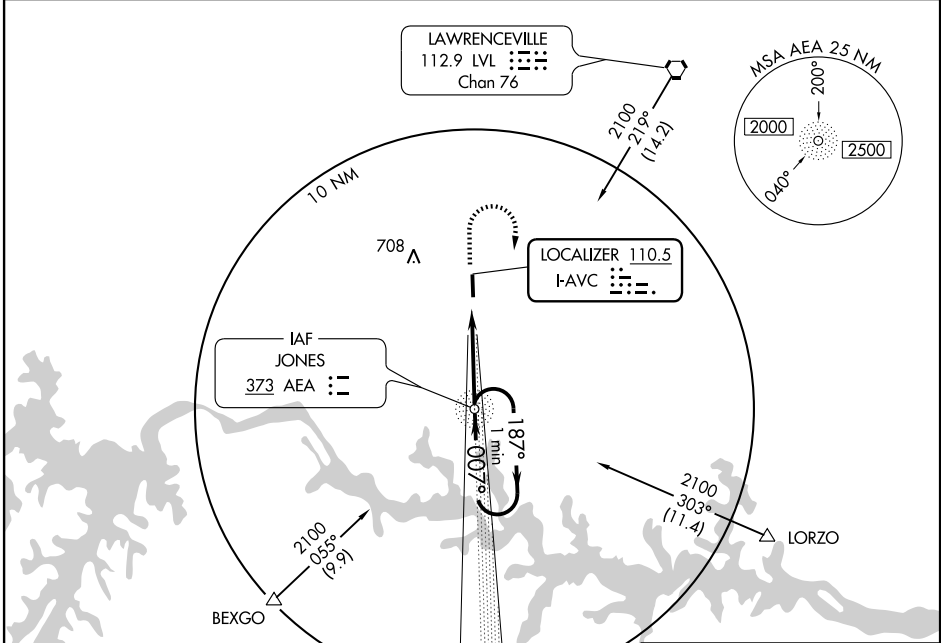
LOC RWY 1

SOUTH HILL / MECKLENBURG-BRUNSWICK RGNL (A VC)

LOC I-AVC 110.5	APP CRS 007°	Rwy Idg 5002
		TDZE 417
		Apt Elev 442

MISSED APPROACH: Climb to 1100 then climbing right turn to 2000 direct AEA NDB and hold.

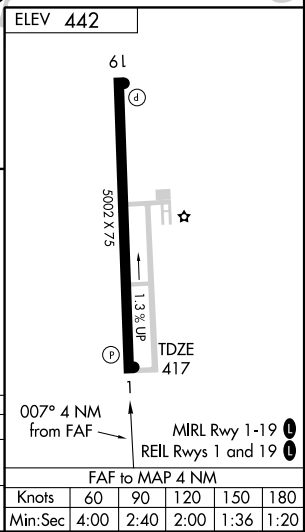
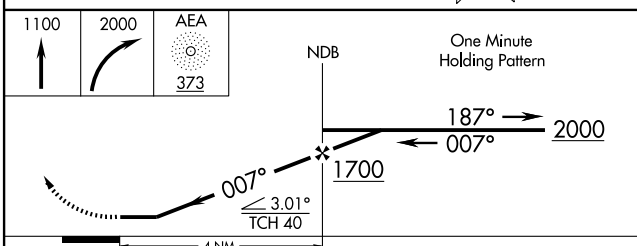
AWOS-3 127.525	WASHINGTON CENTER 118.75 377.1	UNICOM 122.8 (CTAF) 0
--------------------------	--	---------------------------------



NE-3, 11 MAR 2010 to 08 APR 2010

NE-3, 11 MAR 2010 to 08 APR 2010

ADF REQUIRED



CATEGORY	A	B	C	D
S-1	800-1	383 (400-1)		800-1½ 383 (400-1½)
CIRCLING	800-1 358 (400-1)	900-1 458 (500-1)	900-1½ 458 (500-1½)	1060-2 618 (700-2)

Knots	60	90	120	150	180
Min:Sec	4:00	2:40	2:00	1:36	1:20

SOUTH HILL, VIRGINIA
Orig 10042

SOUTH HILL / MECKLENBURG-BRUNSWICK RGNL (A VC)
36°41'N - 78°03'W

LOC RWY 1