

MINEOLA/QUITMAN, TEXAS

AL-6800 (FAA)

RNAV (GPS) RWY 36

MINEOLA/ WOOD COUNTY (JDD)

APP CRS	Rwy Idg	4001
356°	TDZE	433
	Apt Elev	433

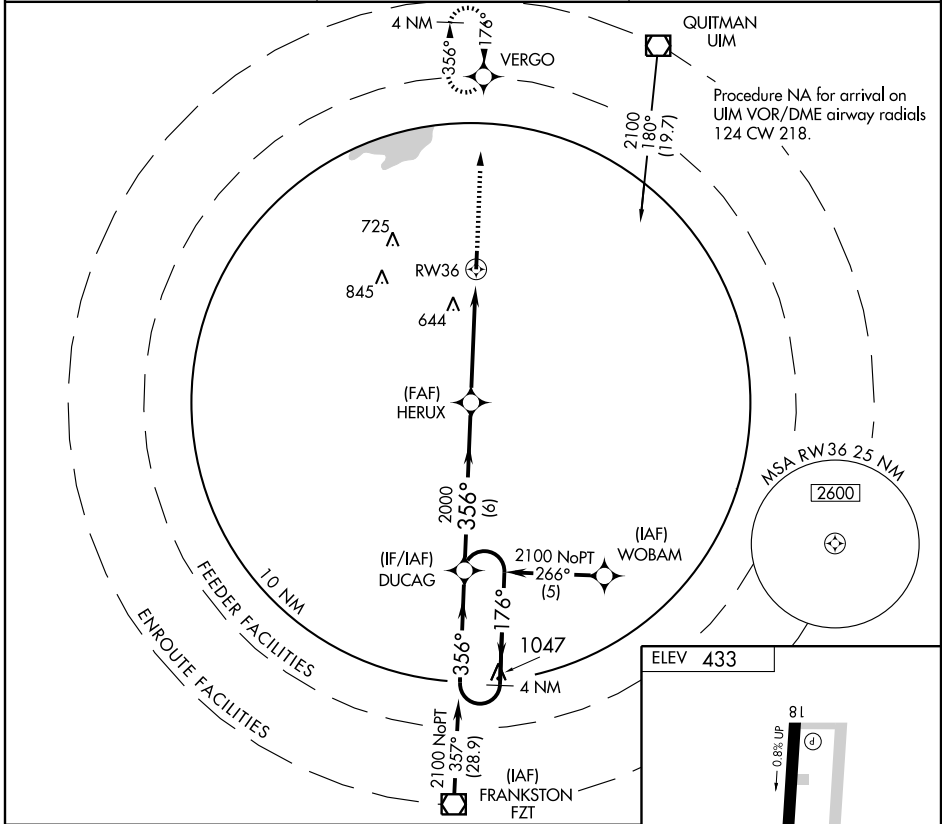
▼ DME/DME RNP-0.3 NA.

MISSED APPROACH: Climb to 2100 direct VERGO and hold.

AWOS-3
118.9

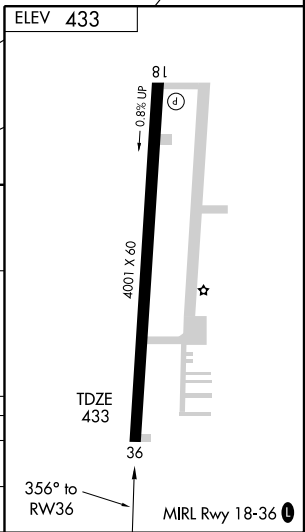
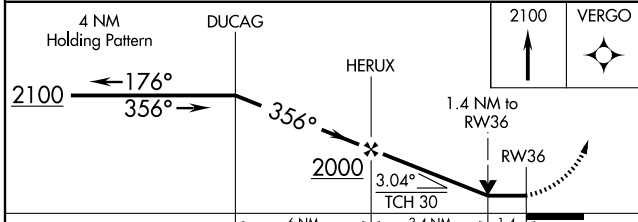
LONGVIEW APP CON ★
128.75 379.15

UNICOM
122.8 (CTAF) 0



SC-2, 11 MAR 2010 to 08 APR 2010

SC-2, 11 MAR 2010 to 08 APR 2010



CATEGORY	A	B	C	D
LNVA MDA	920-1	487 (500-1)	920-1½ 487 (500-1½)	NA
CIRCLING	920-1 487 (500-1)	940-1 507 (600-1)	1000-1½ 567 (600-1½)	NA

MINEOLA/QUITMAN, TEXAS
Orig 09239

32°45' N-95°30' W

MINEOLA/ WOOD COUNTY (JDD)

RNAV (GPS) RWY 36