

# RNAV (GPS) RWY 26

NEW LEXINGTON/ PERRY COUNTY (I86)

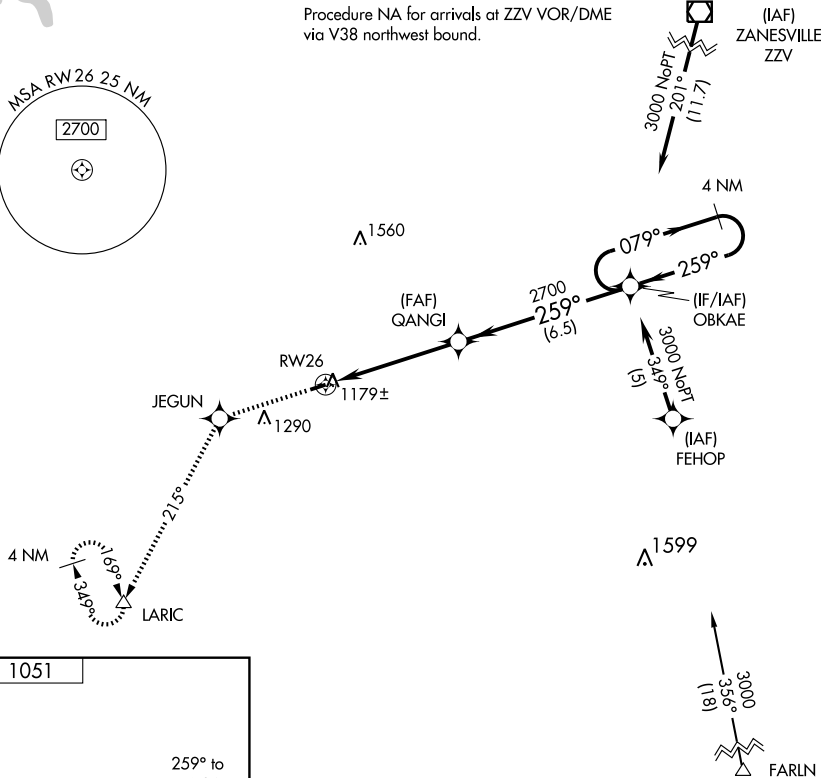
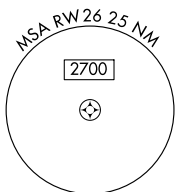
APP CRS <b>259°</b>	Rwy Idg TDZE Apt Elev	<b>3498</b> <b>1047</b> <b>1051</b>
------------------------	-----------------------------	---

**▽** DME/DME RNP-0.3 NA. Visibility reduction by helicopters NA.  
**△** NA Use Zanesville altimeter setting; when not received, use Lancaster altimeter setting and increase all MDA 20 feet.

**MISSED APPROACH:** Climb to 3000 direct JEGUN and via 215° track to LARIC and hold.

INDIANAPOLIS CENTER <b>124.45 370.9</b>	UNICOM <b>122.8 (CTAF) 0</b>
--	---------------------------------

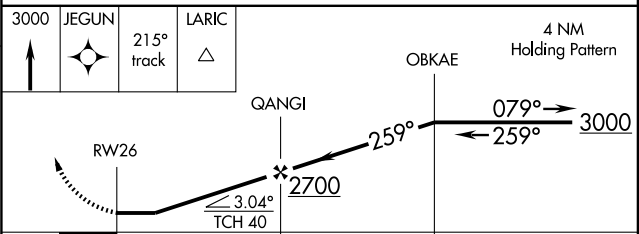
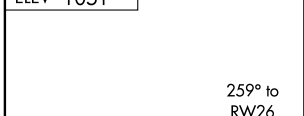
Procedure NA for arrivals at ZZV VOR/DME via V38 northwest bound.



EC-2, 11 MAR 2010 to 08 APR 2010

EC-2, 11 MAR 2010 to 08 APR 2010

ELEV 1051



CATEGORY	A	B	C	D
LNAV MDA	1 500 - 1	453 (500-1)	1 500 - 1¼ 453 (500-1¼)	NA
CIRCLING	1 600 - 1	549 (600-1)	1 600 - 1½ 549 (600-1½)	NA

REIL Rwy 26 0  
MIRL Rwy 8-26 0