

APP CRS 086°	Rwy Idg 5001
	TDZE 4019
	Apt Elev 4053

RNAV (GPS) RWY 9

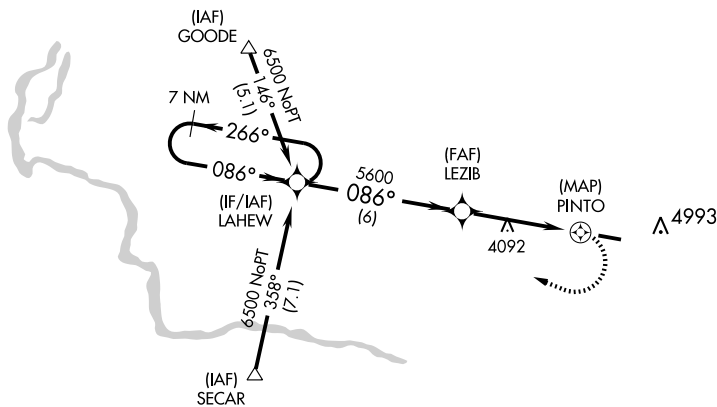
JEROME COUNTY (JER)

⚠ Circling NA north of Rwy 9-27. DME/DME RNP-0.3 NA. Visibility reduction by helicopters NA. When local altimeter setting not received, use Twin Falls altimeter setting and increase all MDA 60 feet, and increase LNAV Cat. D visibility ¼ mile.

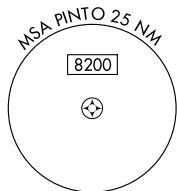
⚠ MISSED APPROACH: Climbing right turn to 6500 direct LAHEW and hold.

ASOS 135.225	TWIN FALLS APP CON ★ 126.7 353.75	SALT LAKE CENTER 118.05 363.0	UNICOM 122.8 (CTAF) 0
------------------------	---	---	---------------------------------

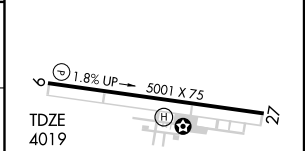
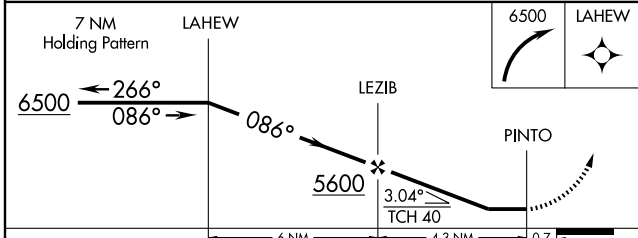
Procedure NA for arrivals at GOODE via V4 northwest bound and V293 northwest bound.



Procedure NA for arrivals at SECAR via V253 southeast bound.



ELEV 4053



CATEGORY	A	B	C	D
LNAV MDA	4420-1	401 (400-1)	4420-1¼	401 (400-1¼)
CIRCLING	4480-1 427 (500-1)	4560-1 507 (600-1)	4560-1½ 507 (600-1½)	4620-2 567 (700-2)

MIRL Rwy 9-27 0

NW-1, 11 MAR 2010 to 08 APR 2010

NW-1, 11 MAR 2010 to 08 APR 2010